



Quality, innovation and customer care, it's in our nature

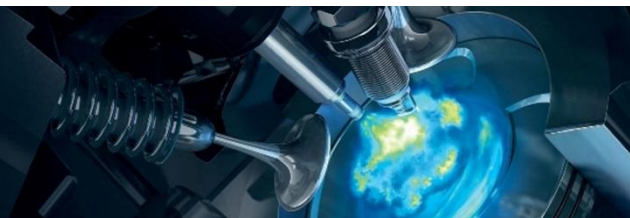


Fitting instruction rear kit

MAKE OF AUTOMOBILE:
TYPE:
TANK CAPACITY:
TANK LOCATION
MODEL YEAR:
SYSTEM APPROVAL NUMBER (R115)
BOOT SET NUMBER

MANUAL NUMBER:
DATE

Mazda
CX-5
74/75 Liter fuel module toroidal
Spare wheel room
2012-
E4-115R-000011 / DLM-LPG 04
2010-2016 → 953/070501001/A
2017- → 953/070501002/A
076/1307274
2019-02-04



Index

General 2

Tank Fuel Module 3

Tank isolation covers 4

Spare wheel room Preparation 5

Tank isolation 6

Ventilation pipes 7

Front Tank bracket placement 8

Rear Tank bracket placement 9

Filler 10

Filter 11

Filler hose 12

Hose connection to tank 14

Floor cover 15

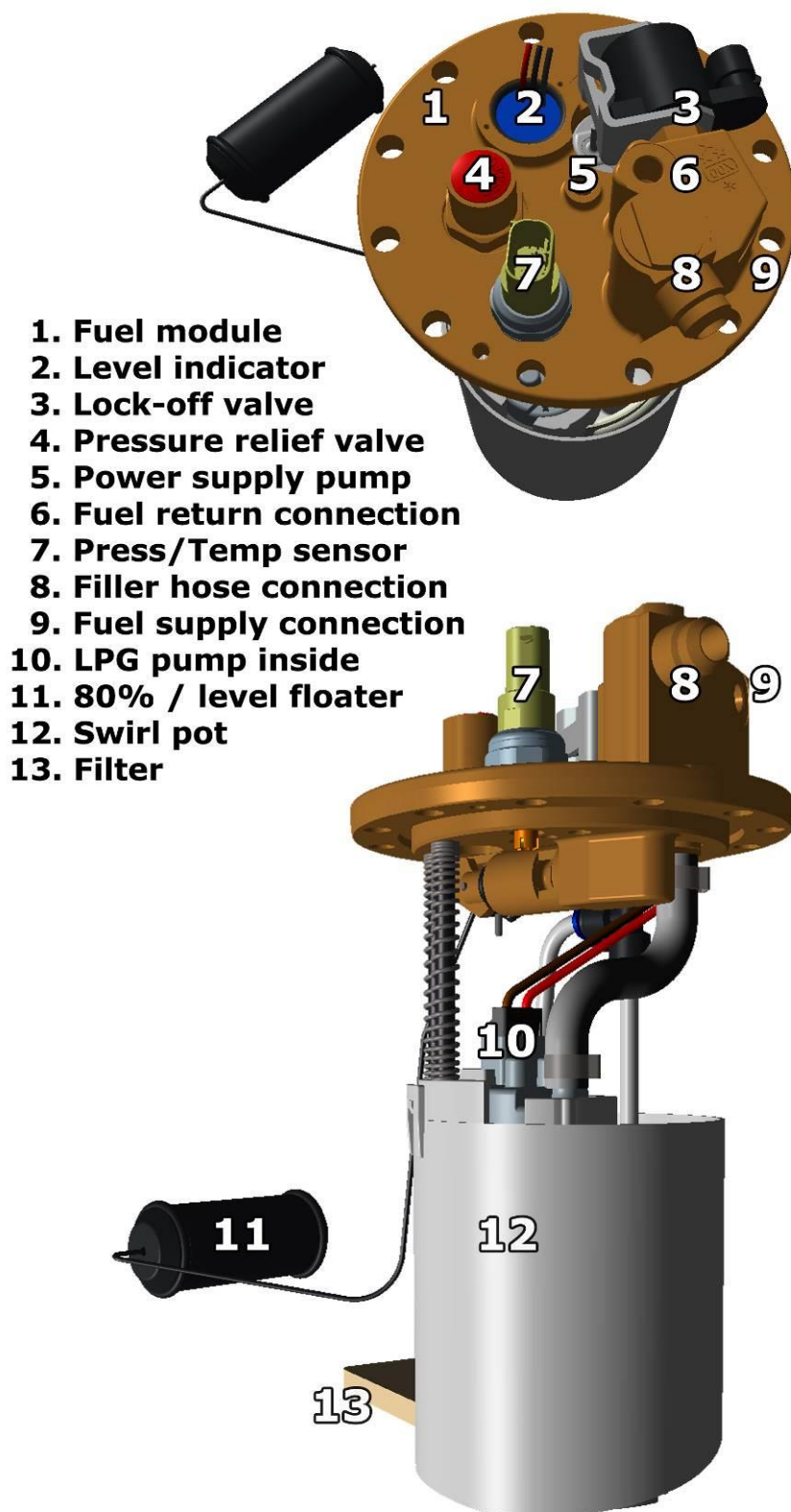
Tank wiring 16



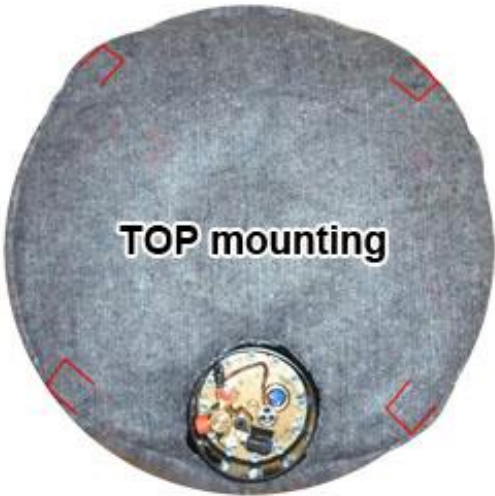
General

- Tools needed for installing the LPG tank :
 - Soldering iron
 - Drilling machine
 - Drilling kit
 - Drill size 22 / 30mm / 55mm / 70 mm
 - Workshop tools.
 - Gas leak detection device
 - Vacuum cleaner
 - Anti-corrosion agent / black body coating
 - Car lift
- Always disconnect the battery when installing / working on the LPG system.
- Make sure the ignition key is outside the car.
Be aware of central door locking, radio / telephone memory code, alarm system.
- Note the jack supporting points and moveable parts when mounting the LPG line.
- After having drilled the holes (use safety glasses) for the mounting of a tank frame, floor ventilation, etc., always treat the holes against corrosion after having removed the grindings.
- When the LPG tank is mounted underneath the vehicle treat the tank with a (black) under coating.
- Failure to follow the instructions in this manual can result in a poor or non-working gas installation or a dangerous situation.
- No component of the LPG-system shall be located within 100mm of the exhaust or similar heat source, unless such components are adequately shielded against heat.
- Mount the LPG tank according to the local LPG regulations. The LPG installer is responsible for that.
- After having completed the installation, check the whole system for gas leakage; use a gas leak detection device.
- Prins Autogassystemen is not responsible for any damages to people or objects as a result of changes to Prins products.
- Beware of moving, hot and rotating parts.
- Check [the Prins site](#) for tank certificates and wiring diagrams.

Tank Fuel Module



Tank isolation covers



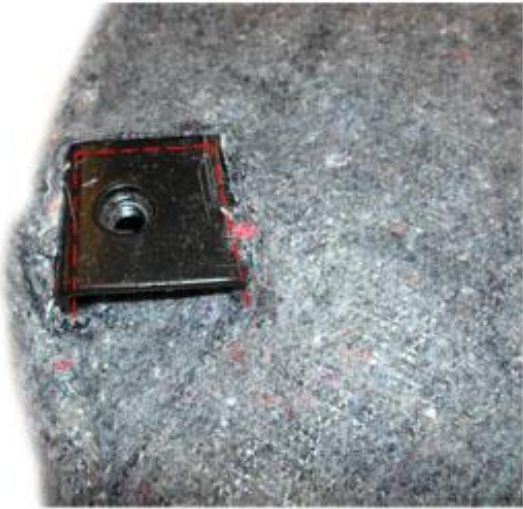
TOP mounting



BOTTOM mounting



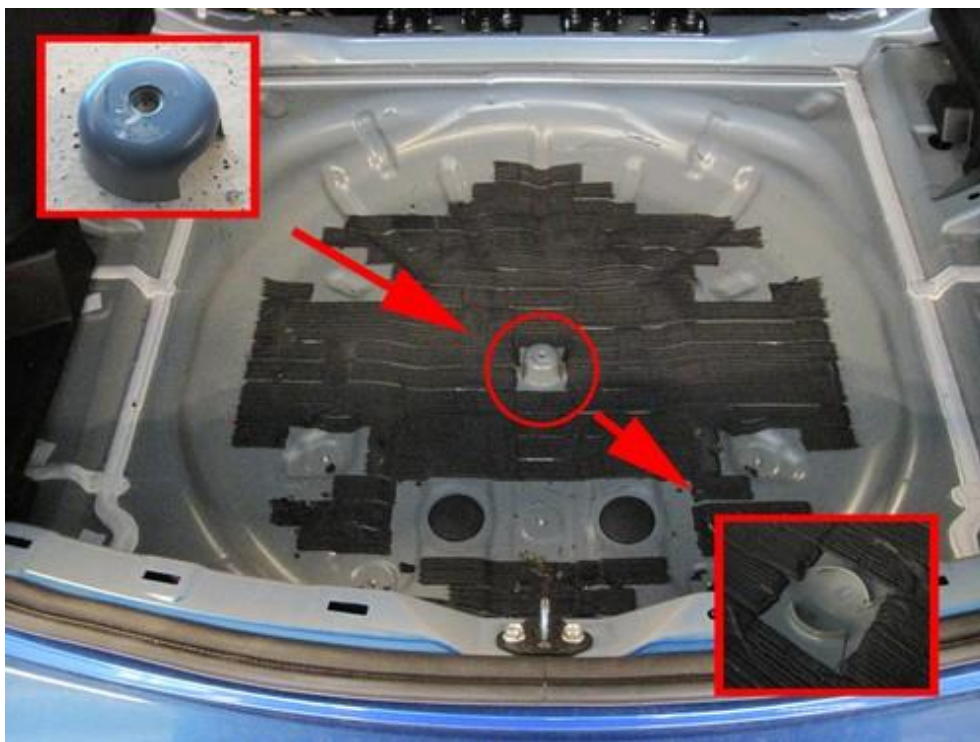
4X



Spare wheel room Preparation



Remove all covers and tools. Remove plastic door step.

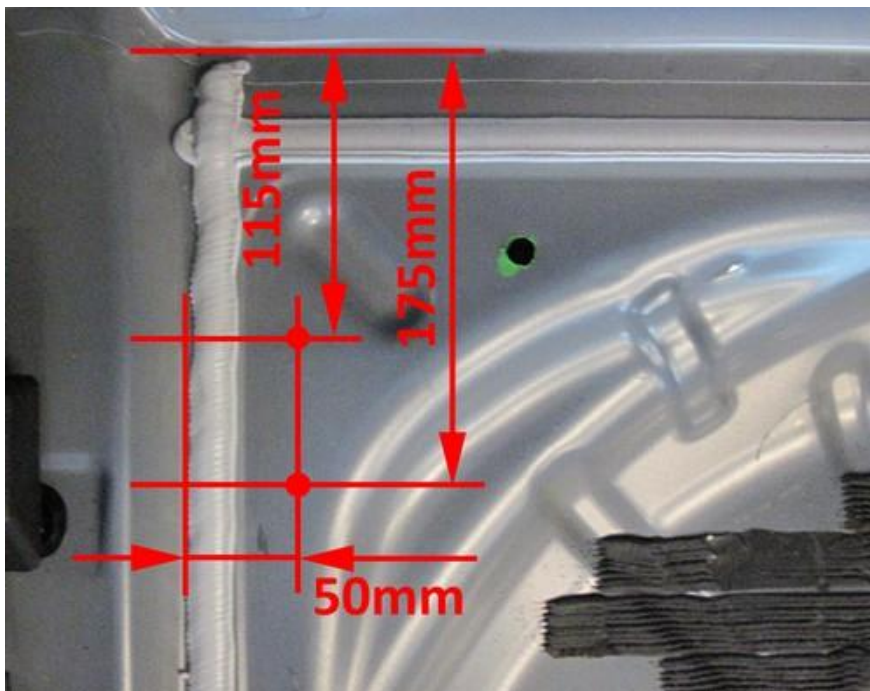


Remove spare wheel support and treat with anti-rust.

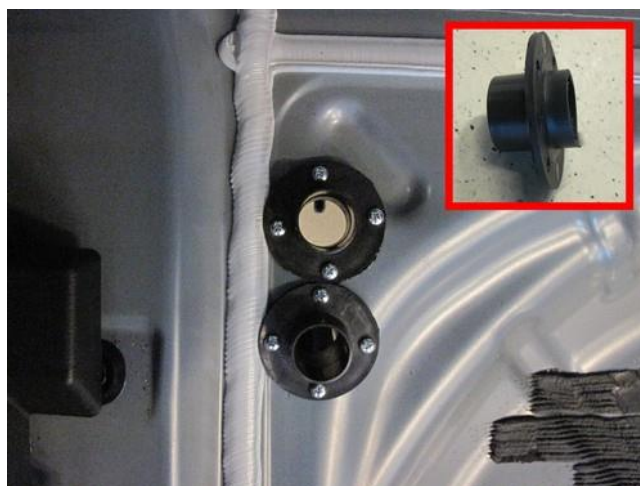
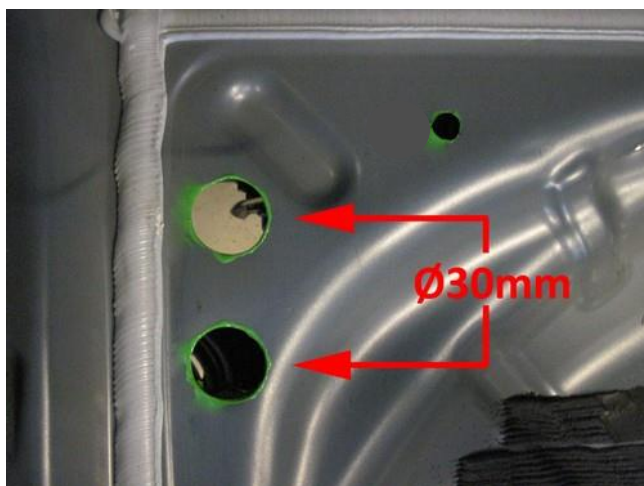
Tank isolation



Ventilation pipes



Mark the holes for the bleeders.



Drill holes for bleeder Ø30mm and treat with anti-rust. Cut of bleeders (see picture) and mount bleeders.

Front Tank bracket placement



Install brackets onto the tank and on top of the back seat brackets, use the original bolts. 25Nm



Left



right

Rear Tank bracket placement

Install rear brackets, mark and drill the holes. Secure brackets with M10 bolts and big washer plates on the underside.



Left



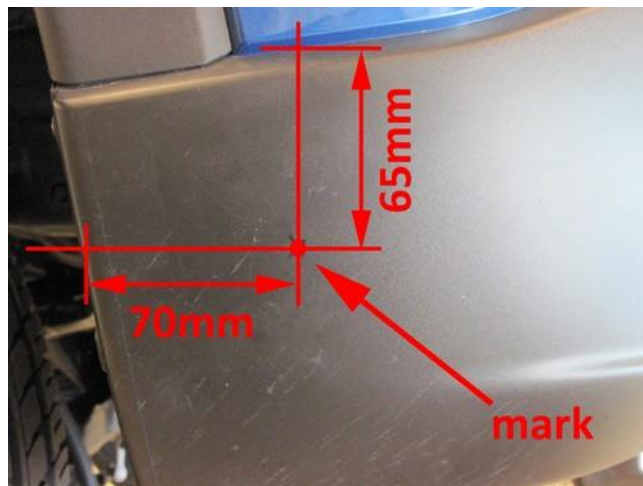
right

Mark holes for drilling.

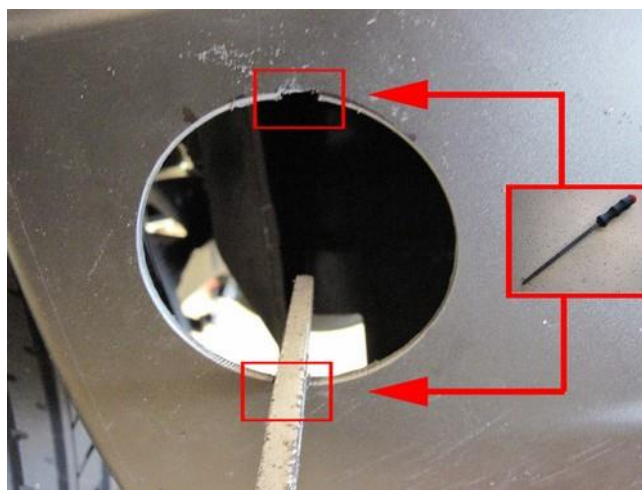
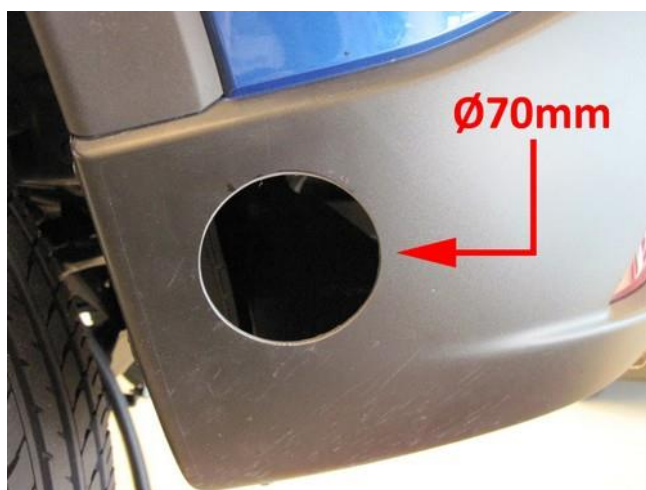


Drill holes Ø11mm and treat with anti-rust.

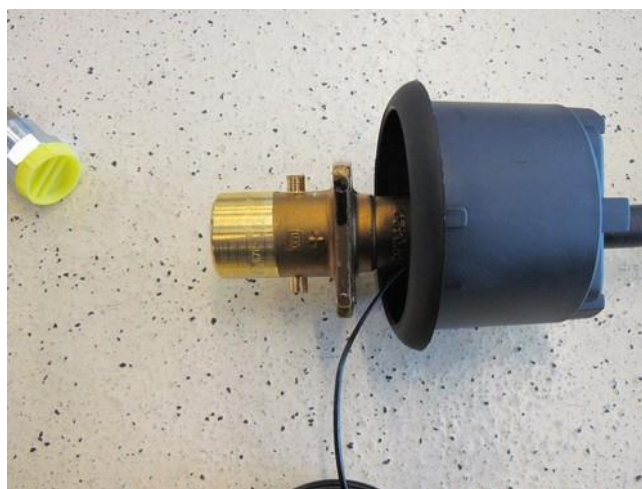


Filler →2017

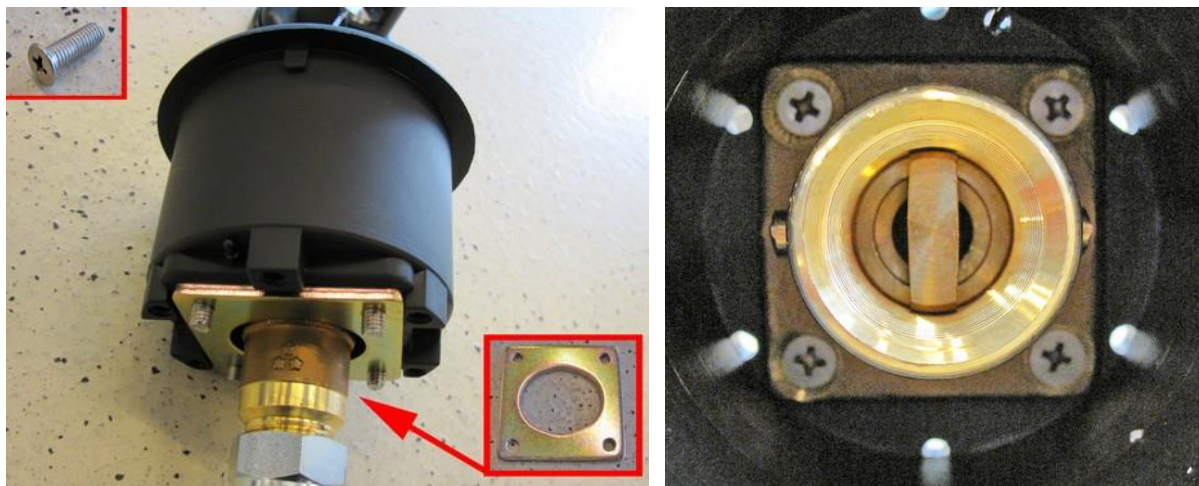
Remove cover in left rear wheel arch. Mark hole for drilling.



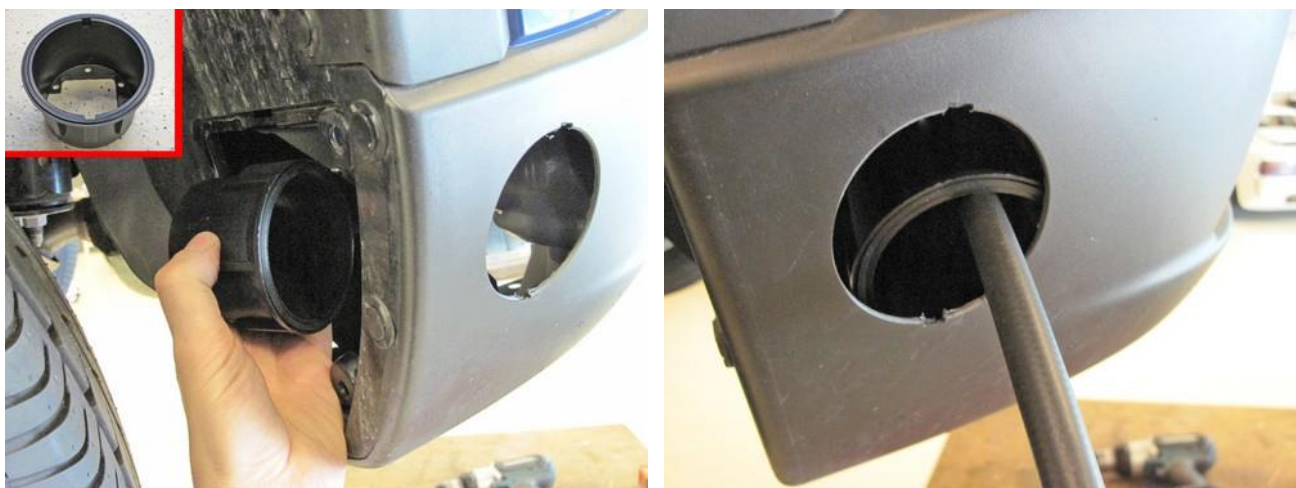
Drill hole Ø70mm for filler. File out "ribs" for the locking of the filler housing.



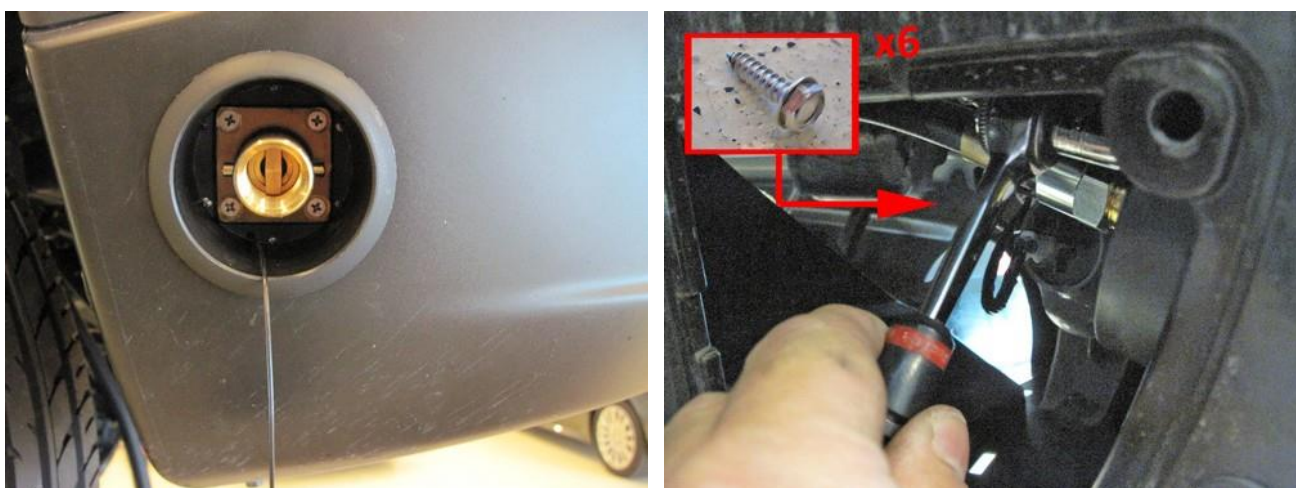
Mount filler hose to filler. Mount filler with hose to filler housing.

Filler →2017

Mount filler with hose to filler housing with screws and back plate.



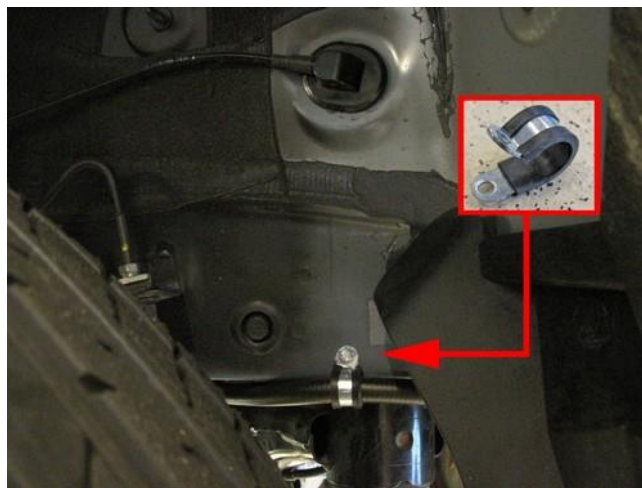
Stab filler hose (with filler) through rear filler housing.



Mount rear filler housing to front filler housing with the supplied parker screws.

Filler hose →2017

Mount filler cap. Fixate filler hose with clamps.



Filler hose routing.



Stab filler hose through bleeder.

Filler 2017→

Mount the filler directly into the filler housing.



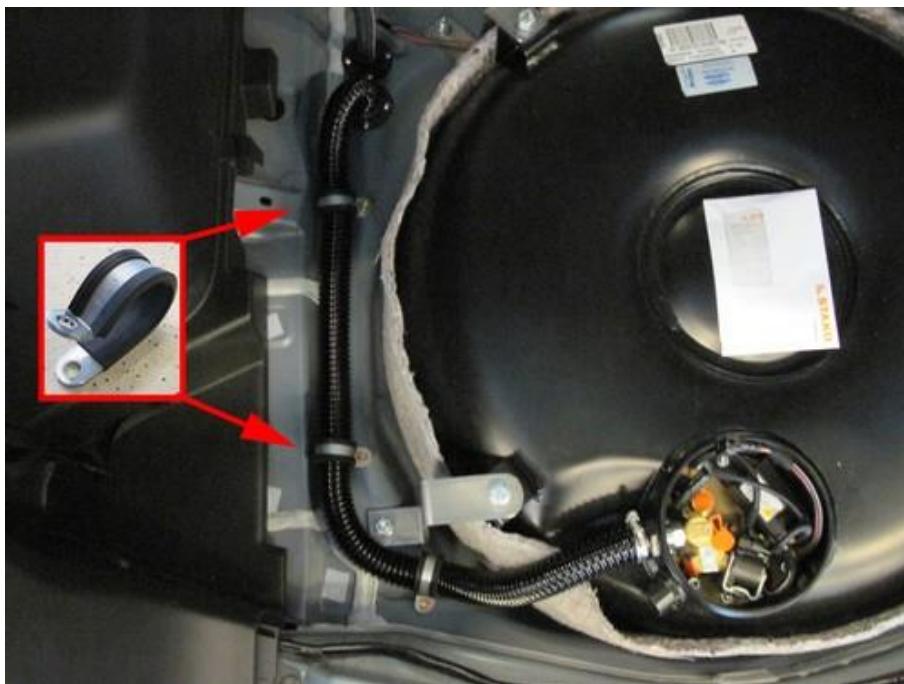
Adapt 2 corners of the filler cap and mount to the filler.



Different routing inside wheel arch for the 2017→ model, the rest is the same.

Hose connection to tank

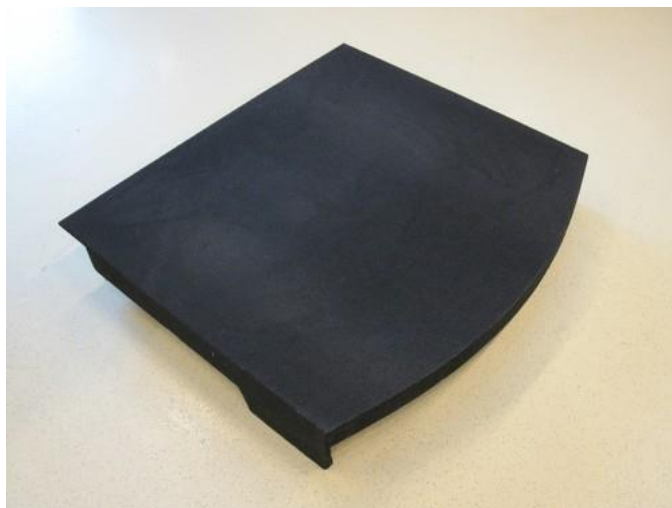
Stab hoses / wiring trough bleeder. Mount tank bleeders to tank.



Mount filler hose to tank with bleeder hose around. Fixate hose with clamps.

Connect fuel lines and wiring to tank (for wiring see last page) with bleeder hose.
Fixate hoses to each other with pulling straps. Mount tank cover.

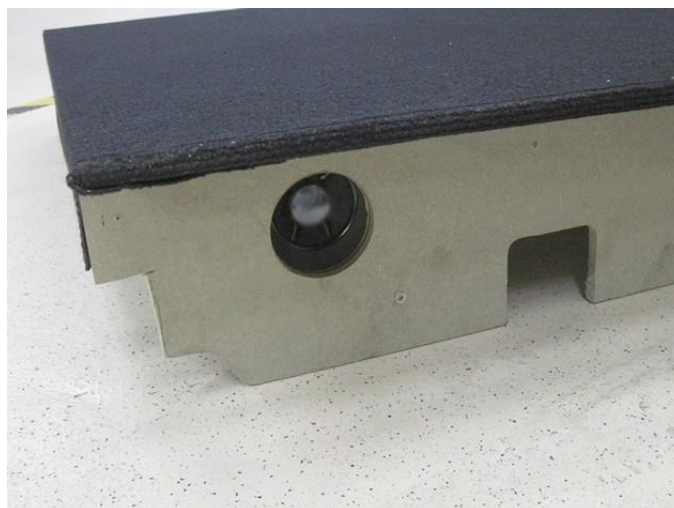
Floor cover



Mount floor cover.



With a luxury trunk, cut away 2 pieces of the floor cover to fit over the plastic bar.



Example: with the option of a subwoofer, remove the speaker from the box and mount to the floor cover. Also drill the hole in the floor cover for the speaker.

Tank wiring

Wire number / code	Wire colour	Connection
3-pole tank level connector 1. 33 Ground tank level 2. 12 Tank level in 3. 11 + tank level supply	Brown-white Blue Red-blue	Connect the 3-pole connector to the tank level sensor.
4-pole Tank P/T sensor 1. 45 Ground P-Tank 2. 38 P-Tank 3. 15 T-Tank 4. 28 +5V sensor	Brown-black Green Grey Red	Connect the 4-pole connector to the P/T sensor.
2-pole Steering Diagnose connector 1. Ground pump driver 2. +12V pump driver	Brown Red	Connect the 2-pole connector to the driver, connector 3.
2-pole Steering Diagnose connector 1. 71 LSS3 Pump driver PWM 2. 64 Pump driver diagnose	Purple-pink Blue-grey	Connect the 2-pole connector to the driver, connector 4.

<i>Pump Driver</i>	<i>Wire colour</i>	<i>Connection</i>	
1. <i>2-pole connector tank lock-off</i>	Green-yellow Brown	From tank pump driver From tank pump driver	
2. <i>3-pole connector tank pump</i>	Red Brown	From tank pump driver From tank pump driver	
3. <i>2-pole connector driver</i>	Brown Red	From main ground From tank pump relay	Ground pump driver +12V pump driver
4. <i>2-pole connector driver</i>	Green Grey	From AFC pin 71 From AFC pin 64	LSS3 Pump driver PWM Pump driver diagnose

