



*Quality, innovation and customer care, it's in our nature*



## Fitting instruction rear kit

MAKE OF AUTOMOBILE:  
TYPE:  
TANK CAPACITY:  
TANK LOCATION  
MODEL YEAR:  
SYSTEM APPROVAL NUMBER ( R115 )  
BOOT SET NUMBER  
MANUAL NUMBER:  
DATE

Mazda  
CX-3  
65 Liter STEP/Stako toroidal  
Spare wheel room  
2018  
E\*-115R-0000\*\* / DLM-LPG \*\*  
953/071310001/A  
076/1308165  
6-10-2016



Index

General ..... 2

Tank Fuel Module ..... 3

Tank isolation covers ..... 4

Spare wheel room ..... 5

Ventilation pipes ..... 6

Tank bracket placement ..... 7

Ventilation / connections ..... 8

Filler bracket installation ..... 9

Filler hose ..... 10

Filler hose ..... 11

Adapt floor cover ..... 12

Finished ..... 13

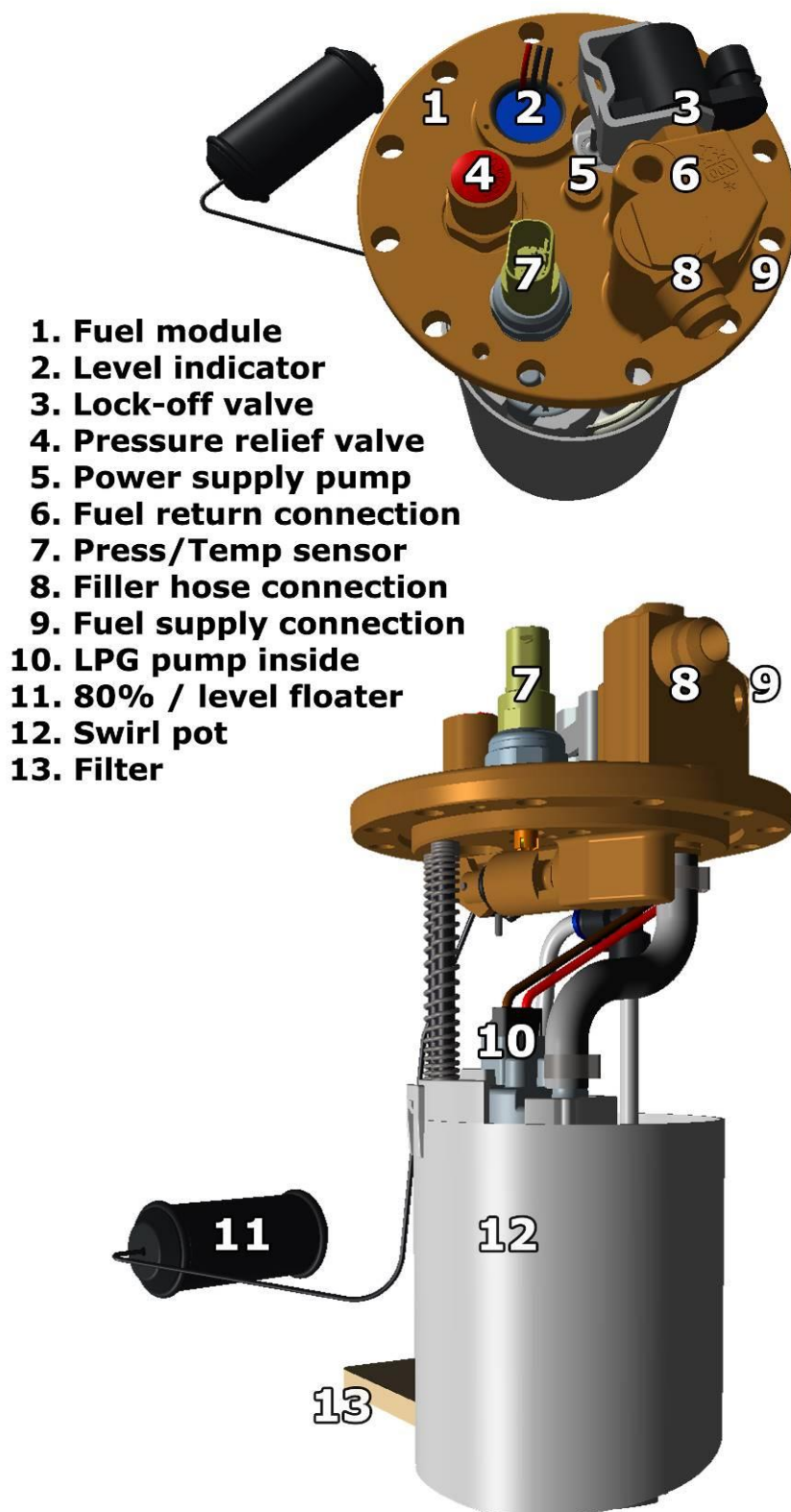
Tank wiring ..... 14



## General

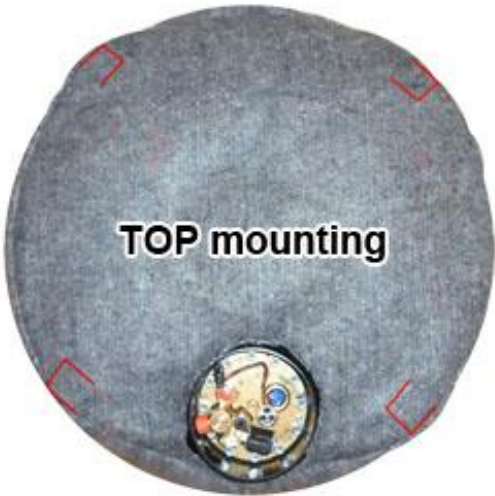
- Tools needed for installing the LPG tank :
  - Soldering iron
  - Drilling machine
  - Drilling kit
  - Drill size 22 / 30mm / 55mm / 70 mm
  - Workshop tools.
  - Gas leak detection device
  - Vacuum cleaner
  - Anti-corrosion agent / black body coating
  - Car lift
- Always disconnect the battery when installing / working on the LPG system.
- Make sure the ignition key is outside the car.  
Be aware of central door locking, radio / telephone memory code, alarm system.
- Note the jack supporting points and moveable parts when mounting the LPG line.
- After having drilled the holes (use safety glasses) for the mounting of a tank frame, floor ventilation, etc., always treat the holes against corrosion after having removed the grindings.
- When the LPG tank is mounted underneath the vehicle treat the tank with a (black) under coating.
- Failure to follow the instructions in this manual can result in a poor or non-working gas installation or a dangerous situation.
- No component of the LPG-system shall be located within 100mm of the exhaust or similar heat source, unless such components are adequately shielded against heat.
- Mount the LPG tank according to the local LPG regulations. The LPG installer is responsible for that.
- After having completed the installation, check the whole system for gas leakage; use a gas leak detection device.
- Prins Autogassystemen is not responsible for any damages to people or objects as a result of changes to Prins products.
- Beware of moving, hot and rotating parts.
- Check [the Prins site](#) for tank certificates and wiring diagrams.

## Tank Fuel Module

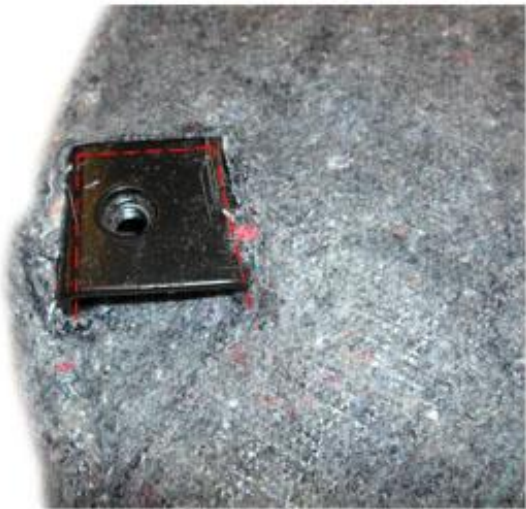




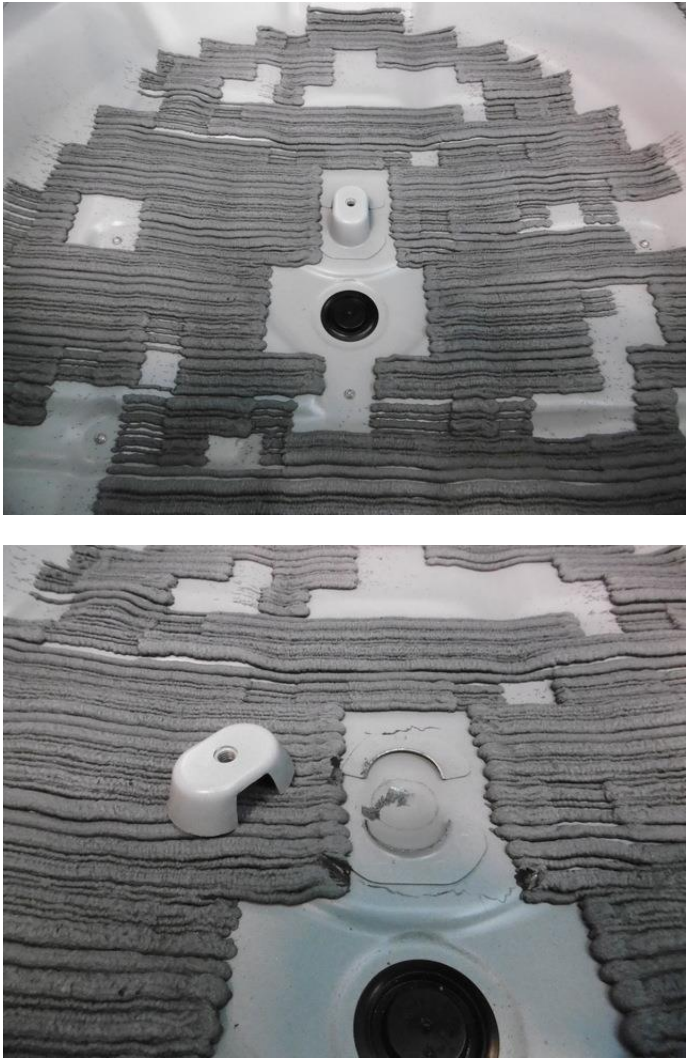
Tank isolation covers



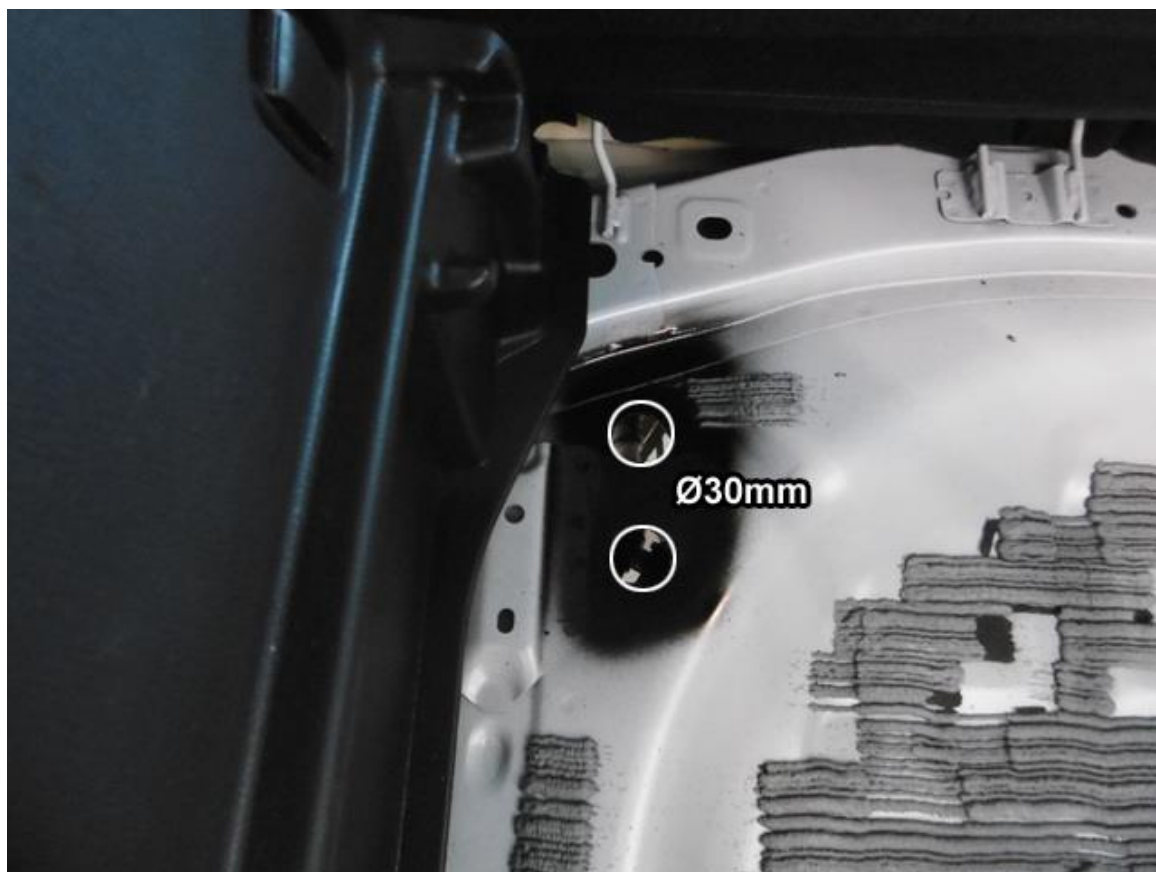
4X



Spare wheel room

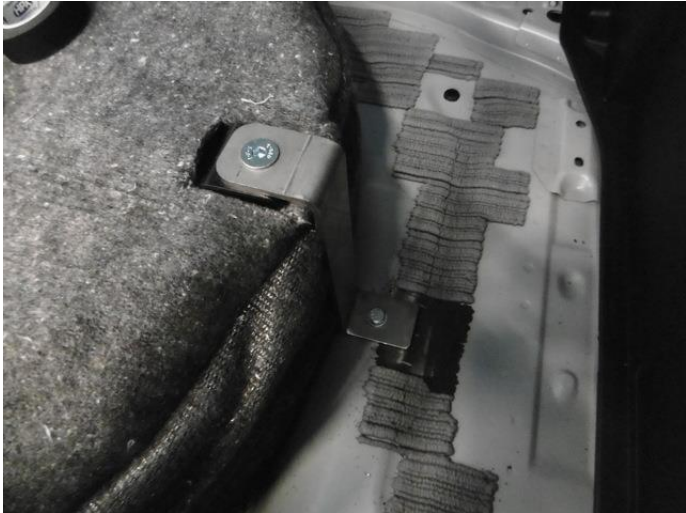


## Ventilation pipes





Tank bracket placement

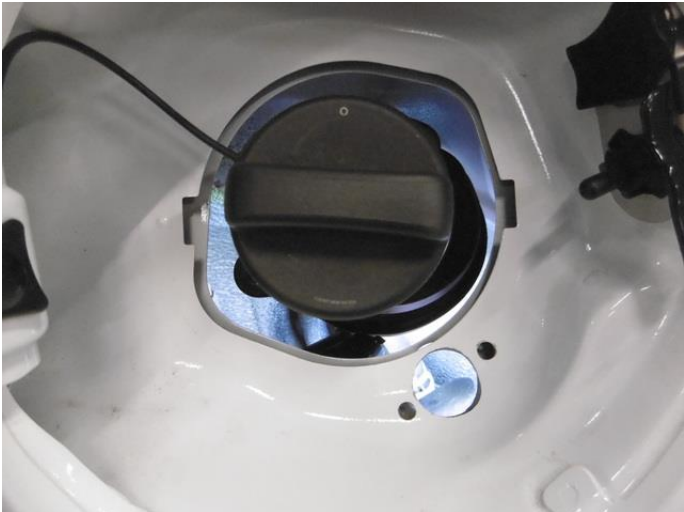
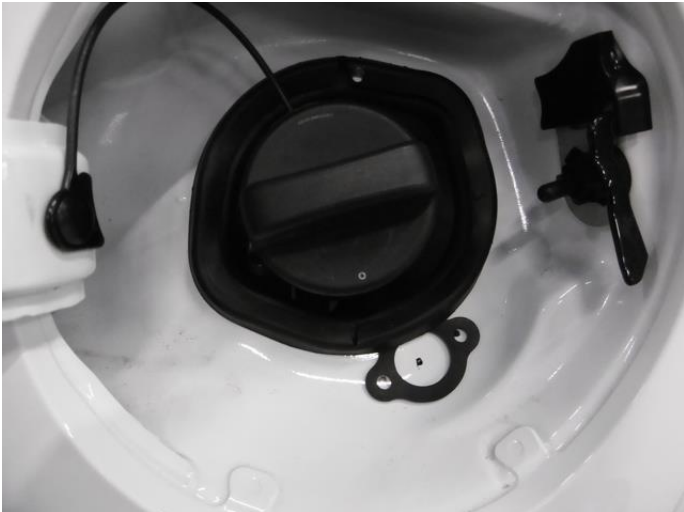




## Ventilation / connections



Filler bracket installation



Filler mounting ring ( in between bodywork )



adapt

## Filler hose

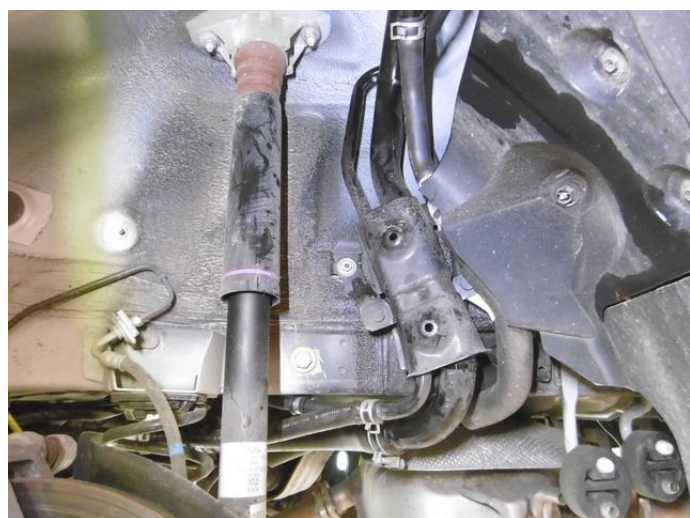
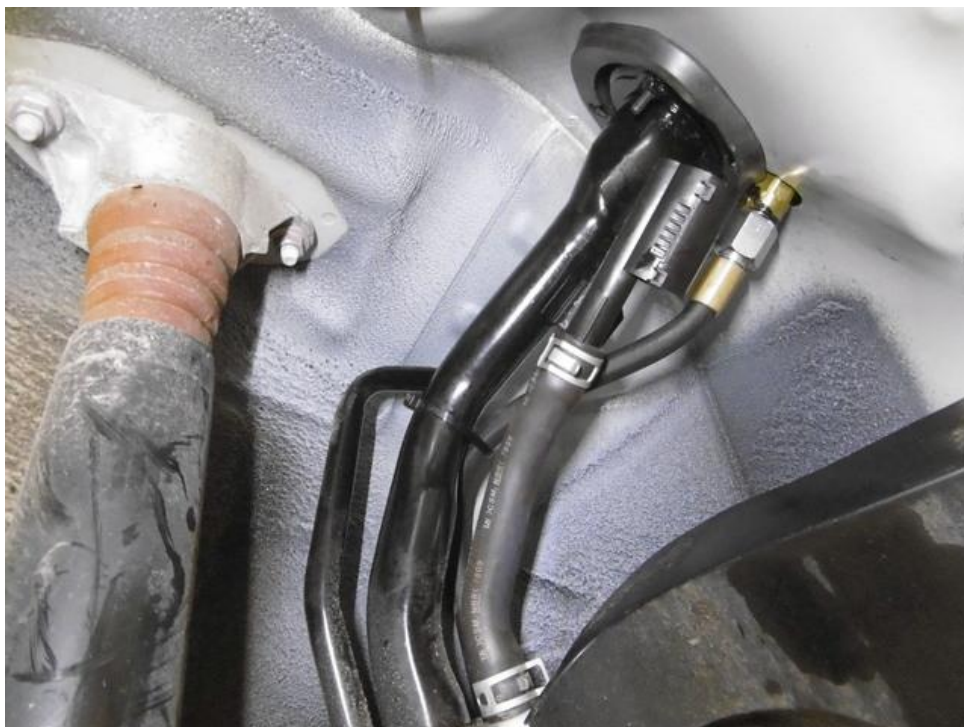


Install the filler with rubber and kit





## Filler hose



Adapt floor cover





Finished





## Tank wiring

Wire number / code	Wire colour	Connection
<b>3-pole tank level connector</b> 1. 33 Ground tank level 2. 12 Tank level in 3. 11 + tank level supply	Brown-white Blue Red-blue	Connect the 3-pole connector to the tank level sensor.
<b>4-pole Tank P/T sensor</b> 1. 45 Ground P-Tank 2. 38 P-Tank 3. 15 T-Tank 4. 28 +5V sensor	Brown-black Green Grey Red	Connect the 4-pole connector to the P/T sensor.
<b>2-pole Steering Diagnose connector</b> 1. Ground pump driver 2. +12V pump driver	Brown Red	Connect the 2-pole connector to the driver, connector 3.
<b>2-pole Steering Diagnose connector</b> 1. 71 LSS3 Pump driver PWM 2. 64 Pump driver diagnose	Purple-pink Blue-grey	Connect the 2-pole connector to the driver, connector 4.

<b><i>Pump Driver</i></b>	<b><i>Wire colour</i></b>	<b><i>Connection</i></b>	
<b>1.</b> <i>2-pole connector tank lock-off</i>	Green-yellow Brown	From tank pump driver From tank pump driver	
<b>2.</b> <i>3-pole connector tank pump</i>	Red Brown	From tank pump driver From tank pump driver	
<b>3.</b> <i>2-pole connector driver</i>	Brown Red	From main ground From tank pump relay	Ground pump driver +12V pump driver
<b>4.</b> <i>2-pole connector driver</i>	Green Grey	From AFC pin 71 From AFC pin 64	LSS3 Pump driver PWM Pump driver diagnose

