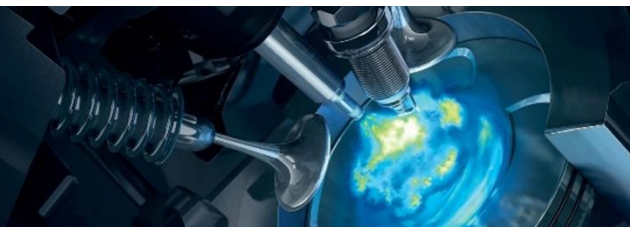




## Fitting instruction rear kit

MAKE OF AUTOMOBILE:  
TYPE:  
TANK CAPACITY:  
TANK LOCATION  
MODEL YEAR:  
SYSTEM APPROVAL NUMBER ( R115 )  
BOOT SET NUMBER  
MANUAL NUMBER:  
DATE

Hyundai  
i30 Wagon ( SW )  
59 Liter Fuel Module Stako toroidal  
Spare wheel room  
2018-  
E4-115R-000017 / DLM-LPG 10  
949/073002011/A  
076/0991459  
17-5-2018



Index

General ..... 2

Tank Fuel Module ..... 3

Tank isolation covers ..... 4

Spare wheel room ..... 5

Tank brackets ..... 6

Ventilation ..... 7

Filler ..... 8

Filler hose ..... 9

Connecting the LPG tank ..... 10

Floor cover spacers ..... 11

Floor cover 1 ..... 12

Floor cover 2 ..... 13

Floor cover 3 ..... 14

Floor cover 4 ..... 15

Finish ..... 16

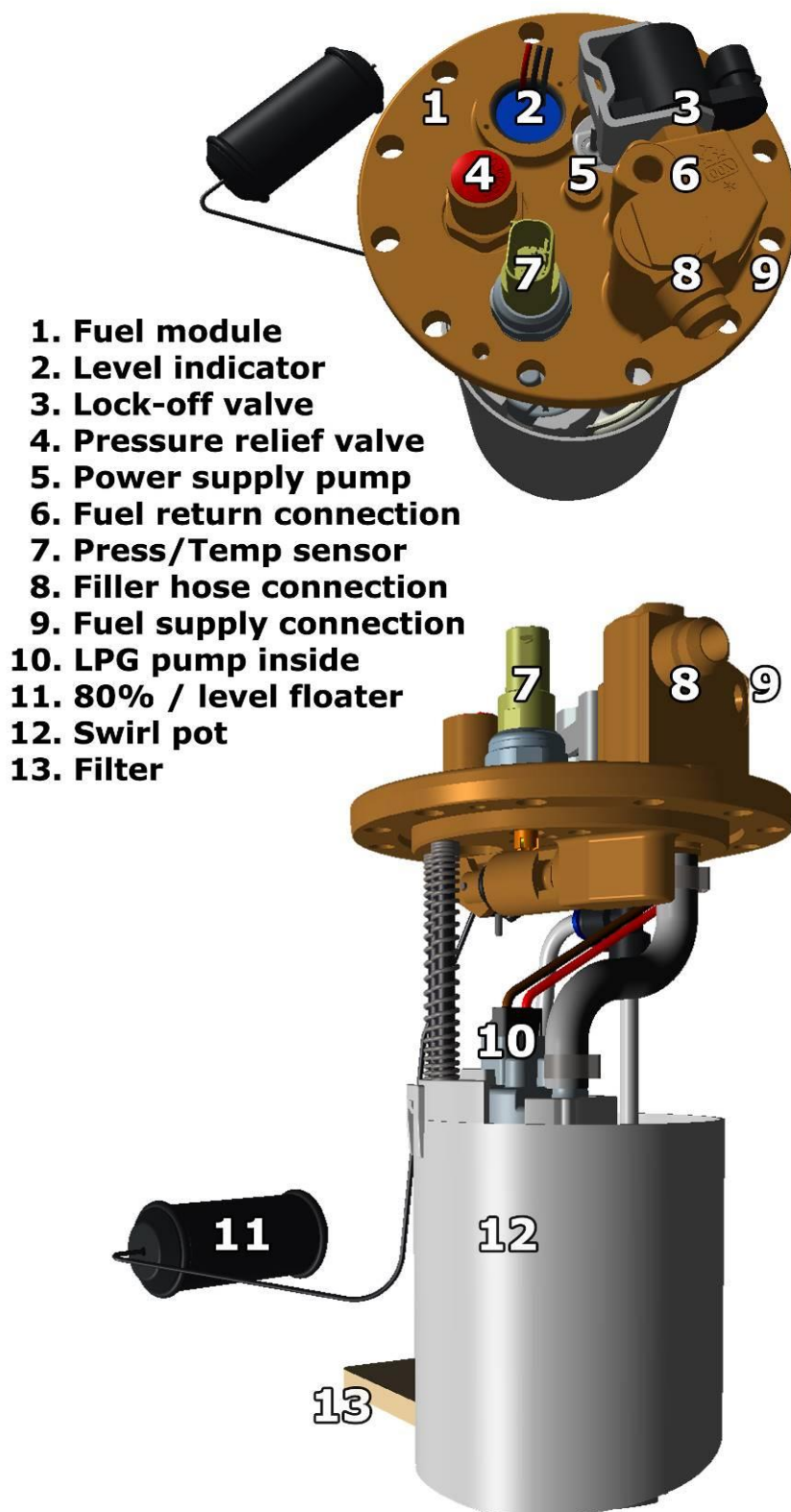
Tank wiring ..... 17



## General

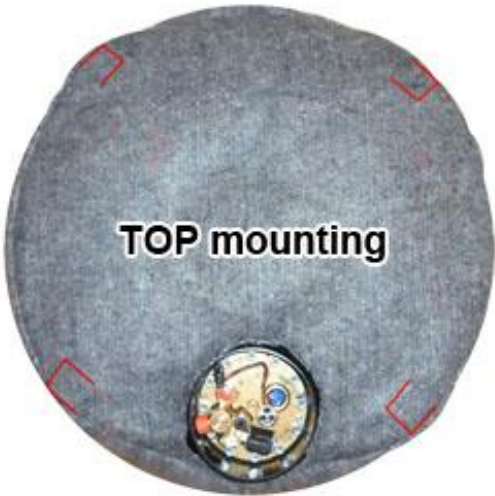
- Tools needed for installing the LPG tank :
  - Soldering iron
  - Drilling machine
  - Drilling kit
  - Drill size 22 / 30mm / 55mm / 70 mm
  - Workshop tools.
  - Gas leak detection device
  - Vacuum cleaner
  - Anti-corrosion agent / black body coating
  - Car lift
- Always disconnect the battery when installing / working on the LPG system.
- Make sure the ignition key is outside the car.  
Be aware of central door locking, radio / telephone memory code, alarm system.
- Note the jack supporting points and moveable parts when mounting the LPG line.
- After having drilled the holes (use safety glasses) for the mounting of a tank frame, floor ventilation, etc., always treat the holes against corrosion after having removed the grindings.
- When the LPG tank is mounted underneath the vehicle treat the tank with a (black) under coating.
- Failure to follow the instructions in this manual can result in a poor or non-working gas installation or a dangerous situation.
- No component of the LPG-system shall be located within 100mm of the exhaust or similar heat source, unless such components are adequately shielded against heat.
- Mount the LPG tank according to the local LPG regulations. The LPG installer is responsible for that.
- After having completed the installation, check the whole system for gas leakage; use a gas leak detection device.
- Prins Autogassystemen is not responsible for any damages to people or objects as a result of changes to Prins products.
- Beware of moving, hot and rotating parts.
- Check [the Prins site](#) for tank certificates and wiring diagrams.

## Tank Fuel Module

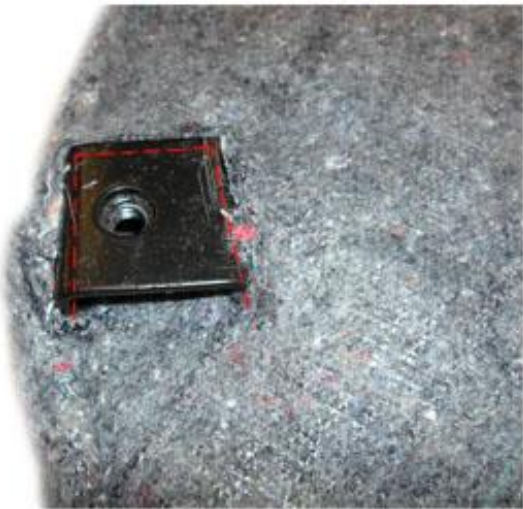




Tank isolation covers



4X



## Spare wheel room

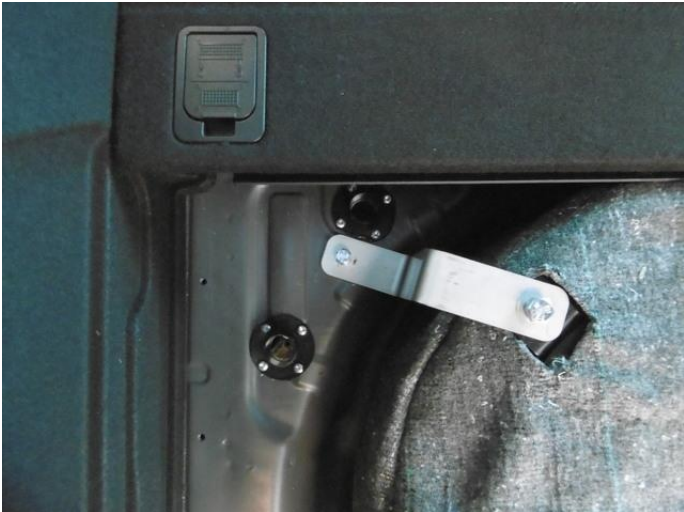




Tank brackets



Ventilation





Filler



Filler hose



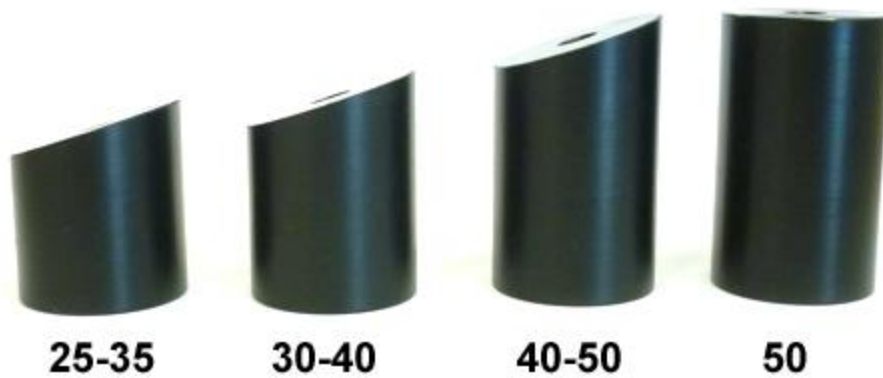


Connecting the LPG tank





## Floor cover spacers



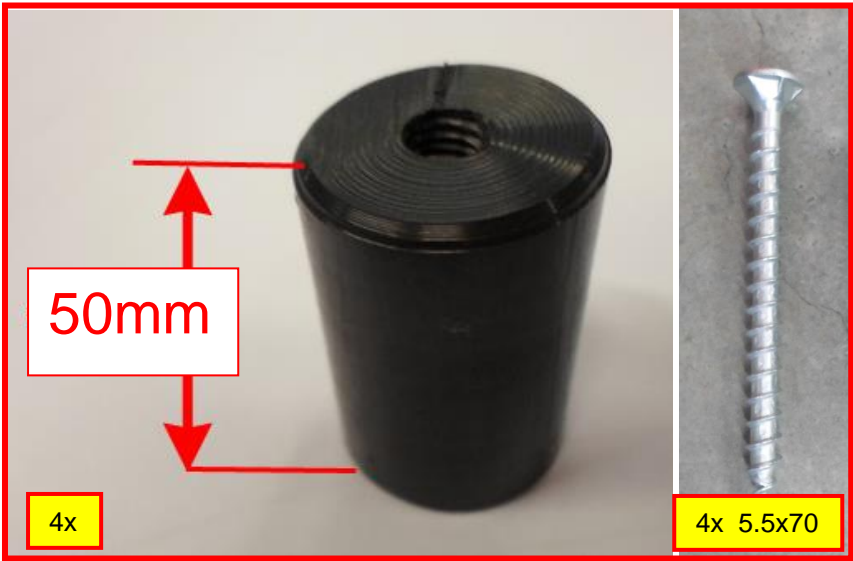
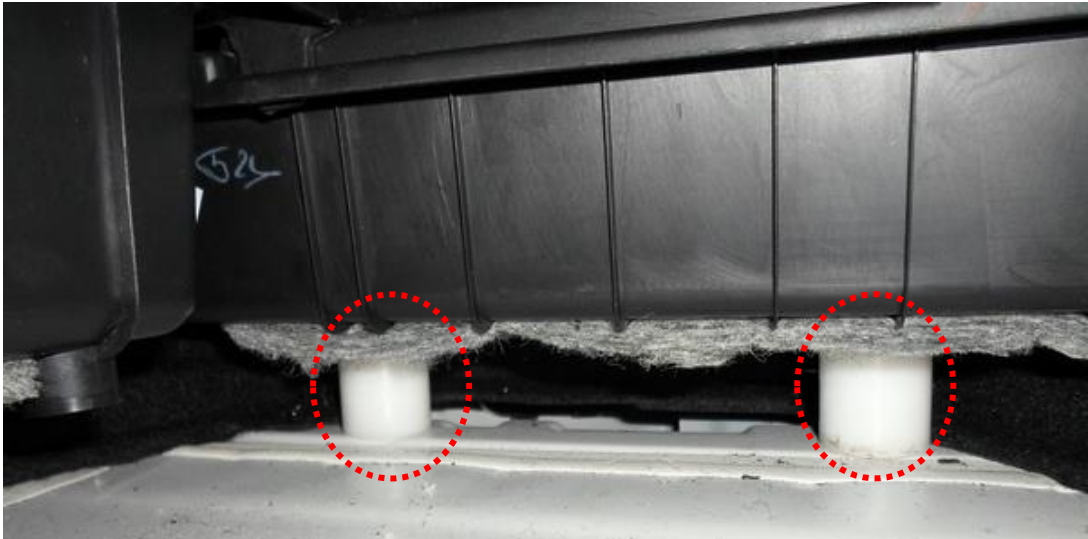
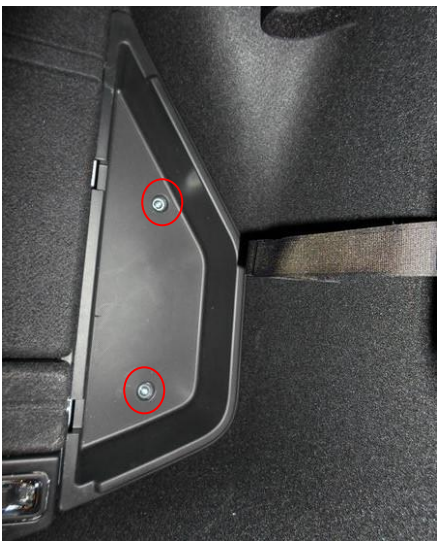
25-35 : front, middle (1x)

30-40 : front, left and right (2x)

40-50 : rear, left and right (2x)

50 : rear side, left and right (4x)

Floor cover 1

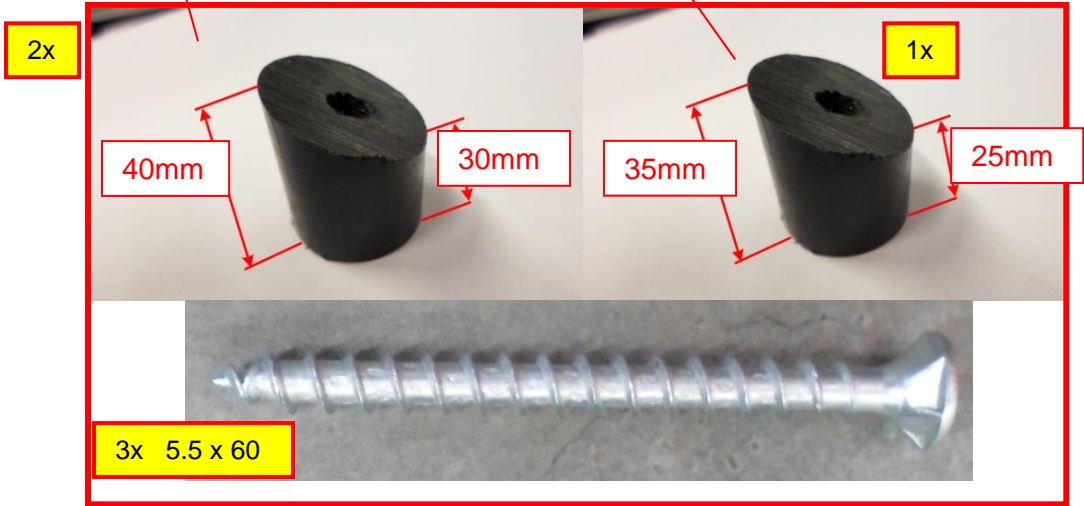
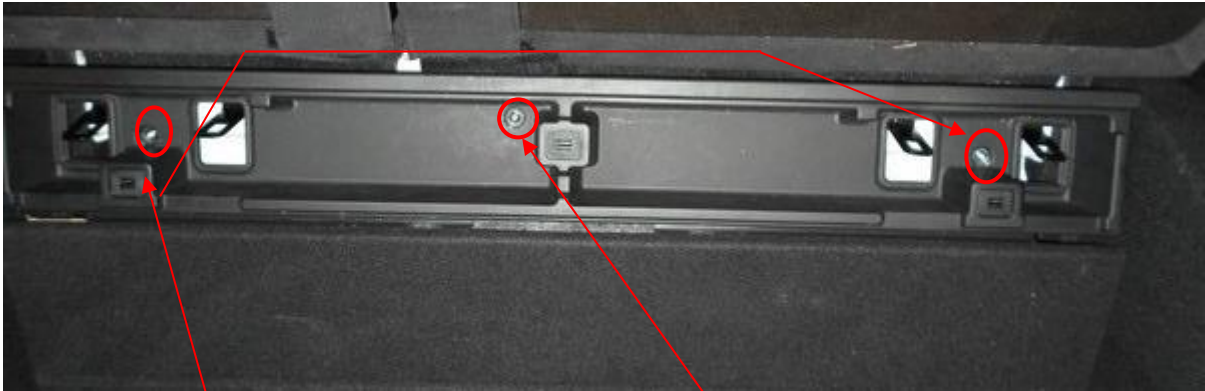


Floor cover 2





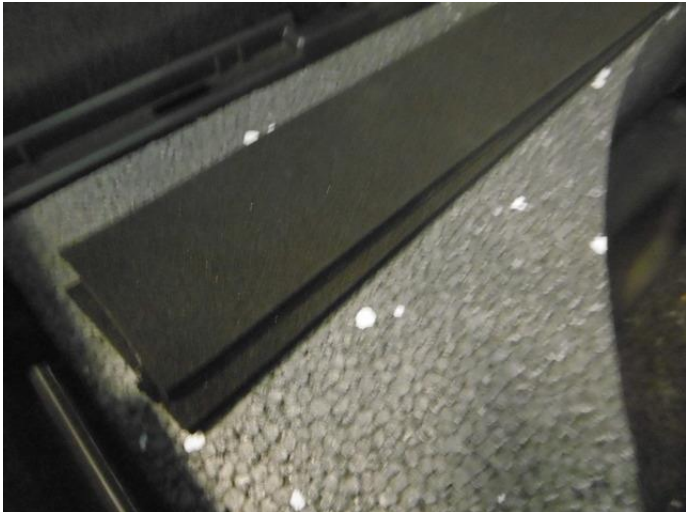
Floor cover 3



Low sides 30 & 25 MM = BACK SEAT SIDE

High sides 40 & 35 MM = REAR SIDE

Floor cover 4



## Finish





## Tank wiring

Wire number / code	Wire colour	Connection
<b>3-pole tank level connector</b> 1. 33 Ground tank level 2. 12 Tank level in 3. 11 + tank level supply	Brown-white Blue Red-blue	Connect the 3-pole connector to the tank level sensor.
<b>4-pole Tank P/T sensor</b> 1. 45 Ground P-Tank 2. 38 P-Tank 3. 15 T-Tank 4. 28 +5V sensor	Brown-black Green Grey Red	Connect the 4-pole connector to the P/T sensor.
<b>2-pole Steering Diagnose connector</b> 1. Ground pump driver 2. +12V pump driver	Brown Red	Connect the 2-pole connector to the driver, connector 3.
<b>2-pole Steering Diagnose connector</b> 1. 71 LSS3 Pump driver PWM 2. 64 Pump driver diagnose	Purple-pink Blue-grey	Connect the 2-pole connector to the driver, connector 4.

<b><i>Pump Driver</i></b>	<b><i>Wire colour</i></b>	<b><i>Connection</i></b>	
<b>1.</b> <i>2-pole connector tank lock-off</i>	Green-yellow Brown	From tank pump driver From tank pump driver	
<b>2.</b> <i>3-pole connector tank pump</i>	Red Brown	From tank pump driver From tank pump driver	
<b>3.</b> <i>2-pole connector driver</i>	Brown Red	From main ground From tank pump relay	Ground pump driver +12V pump driver
<b>4.</b> <i>2-pole connector driver</i>	Green Grey	From AFC pin 71 From AFC pin 64	LSS3 Pump driver PWM Pump driver diagnose

