



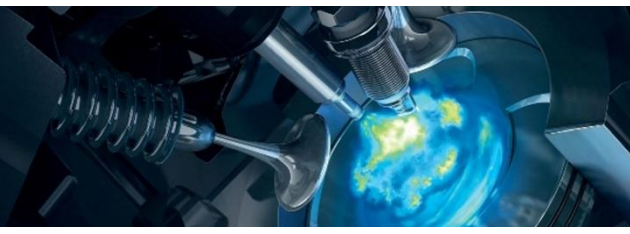
Quality, innovation and customer care, it's in our nature



Fitting instruction rear kit

MAKE OF AUTOMOBILE:
TYPE:
TANK CAPACITY:
TANK LOCATION
MODEL YEAR:
SYSTEM APPROVAL NUMBER (R115)
BOOT SET NUMBER
MANUAL NUMBER:
DATE

Hyundai
Kona
55 Liter STEP/Stako toroidal
Spare wheel room
2018
E4-115R-000017 / DLM-LPG 10
949/071301001/A
076/0991355
28-3-2018



Index

General 2

Tank Fuel Module 3

Tank isolation covers 4

Spare wheel room 5

Ventilation pipes 6

Tank bracket placement 7

Brackets 8

Filler 9

Tank installation..... 10

Adapt floor cover 11

Finished 12

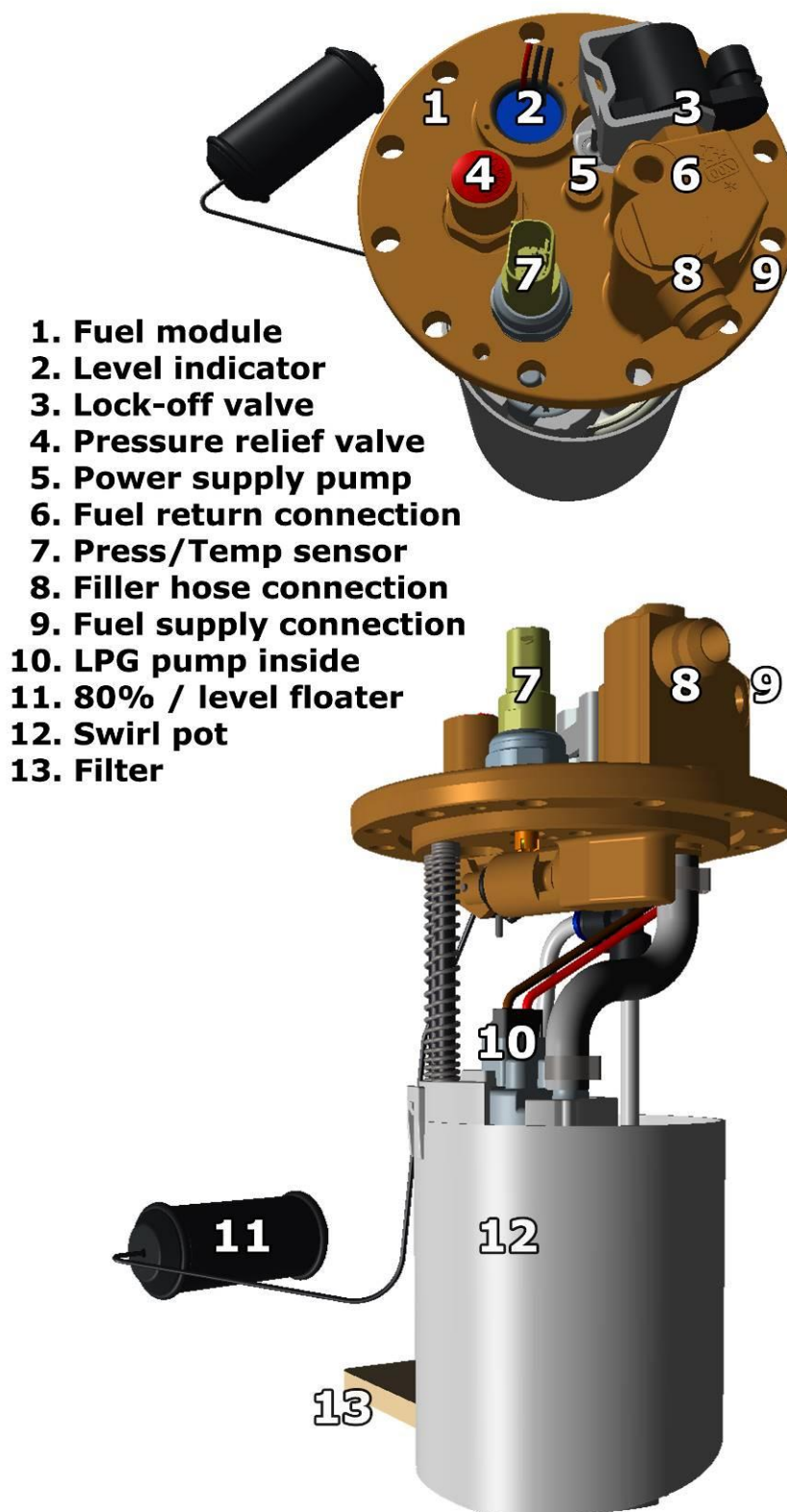
Tank wiring 13



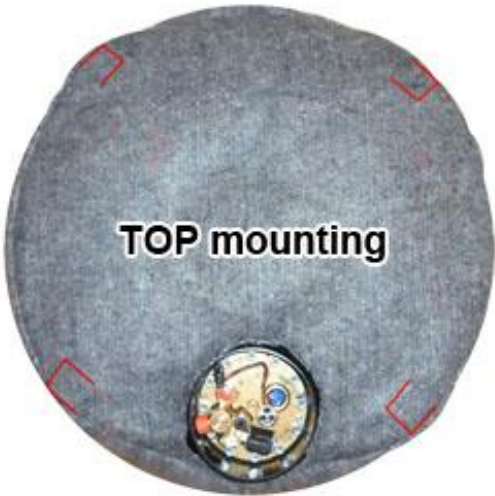
General

- Tools needed for installing the LPG tank :
 - Soldering iron
 - Drilling machine
 - Drilling kit
 - Drill size 22 / 30mm / 55mm / 70 mm
 - Workshop tools.
 - Gas leak detection device
 - Vacuum cleaner
 - Anti-corrosion agent / black body coating
 - Car lift
- Always disconnect the battery when installing / working on the LPG system.
- Make sure the ignition key is outside the car.
Be aware of central door locking, radio / telephone memory code, alarm system.
- Note the jack supporting points and moveable parts when mounting the LPG line.
- After having drilled the holes (use safety glasses) for the mounting of a tank frame, floor ventilation, etc., always treat the holes against corrosion after having removed the grindings.
- When the LPG tank is mounted underneath the vehicle treat the tank with a (black) under coating.
- Failure to follow the instructions in this manual can result in a poor or non-working gas installation or a dangerous situation.
- No component of the LPG-system shall be located within 100mm of the exhaust or similar heat source, unless such components are adequately shielded against heat.
- Mount the LPG tank according to the local LPG regulations. The LPG installer is responsible for that.
- After having completed the installation, check the whole system for gas leakage; use a gas leak detection device.
- Prins Autogassystemen is not responsible for any damages to people or objects as a result of changes to Prins products.
- Beware of moving, hot and rotating parts.
- Check [the Prins site](#) for tank certificates and wiring diagrams.

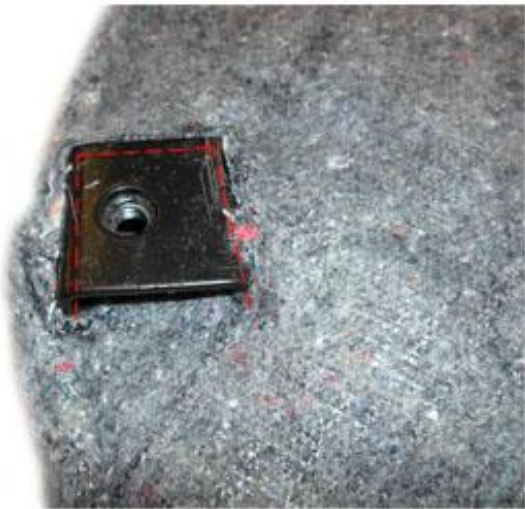
Tank Fuel Module



Tank isolation covers



4X



Spare wheel room



Remove all covers and tools. Remove centre spare wheel support.

Ventilation pipes



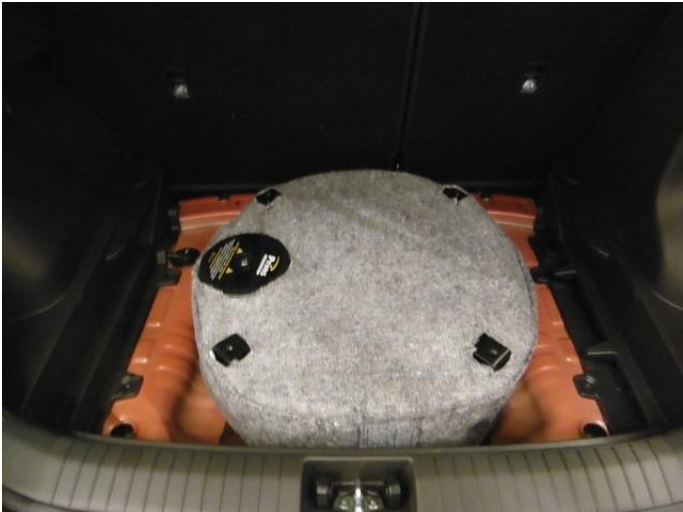
Fuel lines / wiring



Filler hose



Tank bracket placement



Maximum to the front



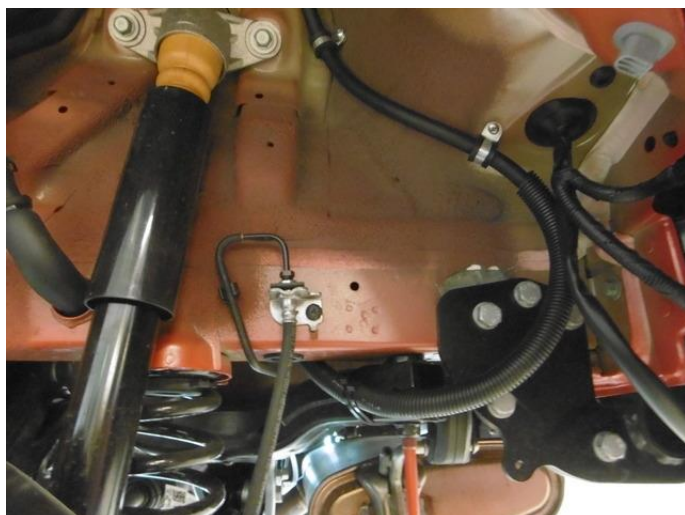
Brackets



Drill 4x Ø9mm



Filler



Tank installation



Adapt floor cover

Foam to close backseat/spare wheel room

Finished



Tank wiring

Wire number / code	Wire colour	Connection
3-pole tank level connector 1. 33 Ground tank level 2. 12 Tank level in 3. 11 + tank level supply	Brown-white Blue Red-blue	Connect the 3-pole connector to the tank level sensor.
4-pole Tank P/T sensor 1. 45 Ground P-Tank 2. 38 P-Tank 3. 15 T-Tank 4. 28 +5V sensor	Brown-black Green Grey Red	Connect the 4-pole connector to the P/T sensor.
2-pole Steering Diagnose connector 1. Ground pump driver 2. +12V pump driver	Brown Red	Connect the 2-pole connector to the driver, connector 3.
2-pole Steering Diagnose connector 1. 71 LSS3 Pump driver PWM 2. 64 Pump driver diagnose	Purple-pink Blue-grey	Connect the 2-pole connector to the driver, connector 4.

Pump Driver	Wire colour	Connection	
1. 2-pole connector tank lock-off	Green-yellow Brown	From tank pump driver From tank pump driver	
2. 3-pole connector tank pump	Red Brown	From tank pump driver From tank pump driver	
3. 2-pole connector driver	Brown Red	From main ground From tank pump relay	Ground pump driver +12V pump driver
4. 2-pole connector driver	Green Grey	From AFC pin 71 From AFC pin 64	LSS3 Pump driver PWM Pump driver diagnose

