



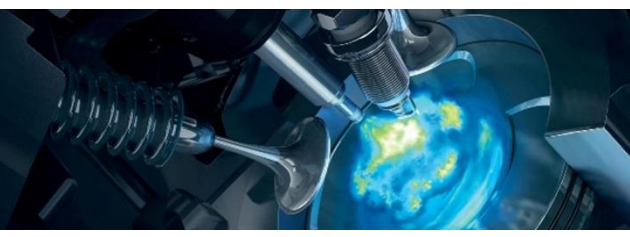
Quality, innovation and customer care, it's in our nature



Fitting instruction rear kit

MAKE OF AUTOMOBILE:
TYPE:
TANK CAPACITY:
TANK LOCATION
MODEL YEAR:
SYSTEM APPROVAL NUMBER (R115)
BOOT SET NUMBER
MANUAL NUMBER:
DATE

Ford
Transit Connect III
65 Liter STEP/Stako toroidal
Spare wheel room
2018-
E*-115R-0000** / DLM-LPG **
947/070301002/A
076/0708265
18-12-2018



Index

General 2

Tank Fuel Module 3

Tank isolation covers 4

Prepare 5

Preparation 6

Preparation 7

Underside car 8

Underside car 9

Inside car 10

Fuel line routing 11

Prepare the Fuel Module 12

Tank connections 13

Filler 14

Filler 15

Ventilation pipe Fuel lines 16

Ventilation pipe Filler hose 17

Tank installation..... 18

Water drain 19

Tank finish 20

Situation..... 21

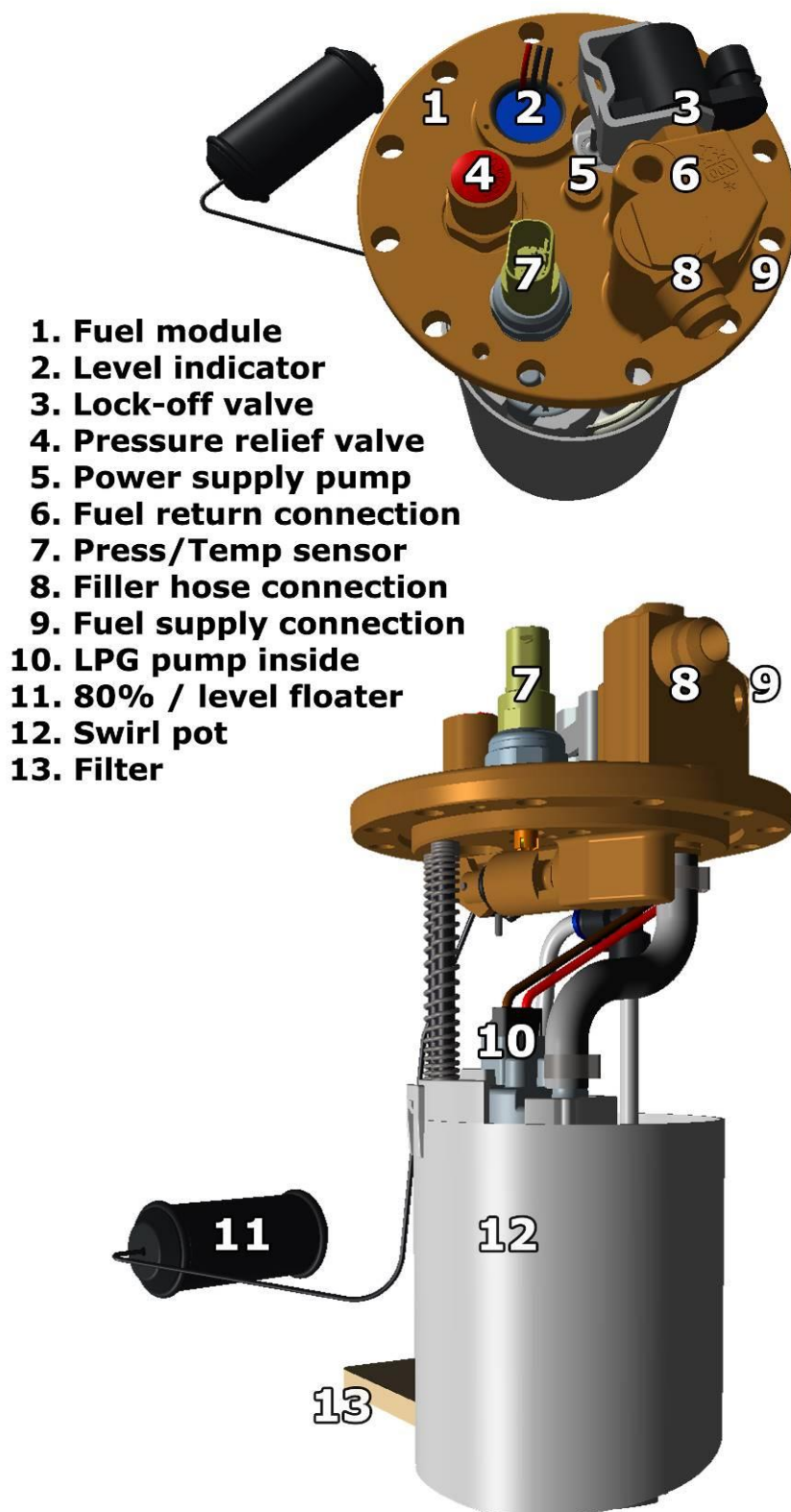
Tank wiring 22



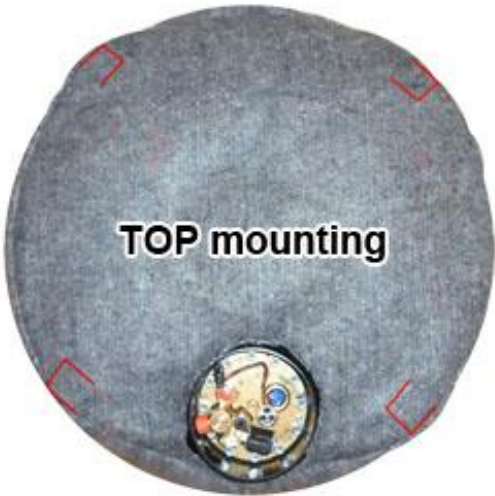
General

- Tools needed for installing the LPG tank :
 - Soldering iron
 - Drilling machine
 - Drilling kit
 - Drill size 22 / 30mm / 55mm / 70 mm
 - Workshop tools.
 - Gas leak detection device
 - Vacuum cleaner
 - Anti-corrosion agent / black body coating
 - Car lift
- Always disconnect the battery when installing / working on the LPG system.
- Make sure the ignition key is outside the car.
Be aware of central door locking, radio / telephone memory code, alarm system.
- Note the jack supporting points and moveable parts when mounting the LPG line.
- After having drilled the holes (use safety glasses) for the mounting of a tank frame, floor ventilation, etc., always treat the holes against corrosion after having removed the grindings.
- When the LPG tank is mounted underneath the vehicle treat the tank with a (black) under coating.
- Failure to follow the instructions in this manual can result in a poor or non-working gas installation or a dangerous situation.
- No component of the LPG-system shall be located within 100mm of the exhaust or similar heat source, unless such components are adequately shielded against heat.
- Mount the LPG tank according to the local LPG regulations. The LPG installer is responsible for that.
- After having completed the installation, check the whole system for gas leakage; use a gas leak detection device.
- Prins Autogassystemen is not responsible for any damages to people or objects as a result of changes to Prins products.
- Beware of moving, hot and rotating parts.
- Check [the Prins site](#) for tank certificates and wiring diagrams.

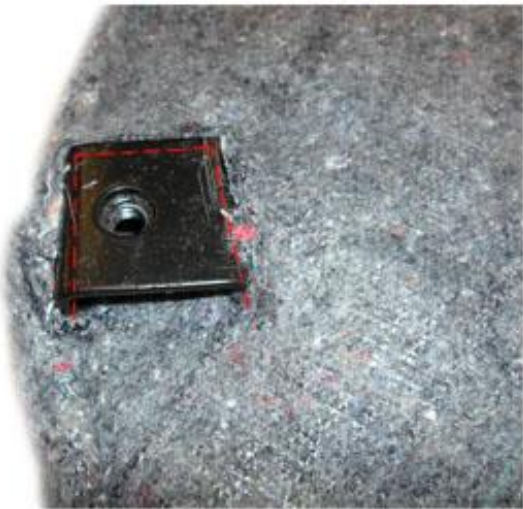
Tank Fuel Module



Tank isolation covers



4X



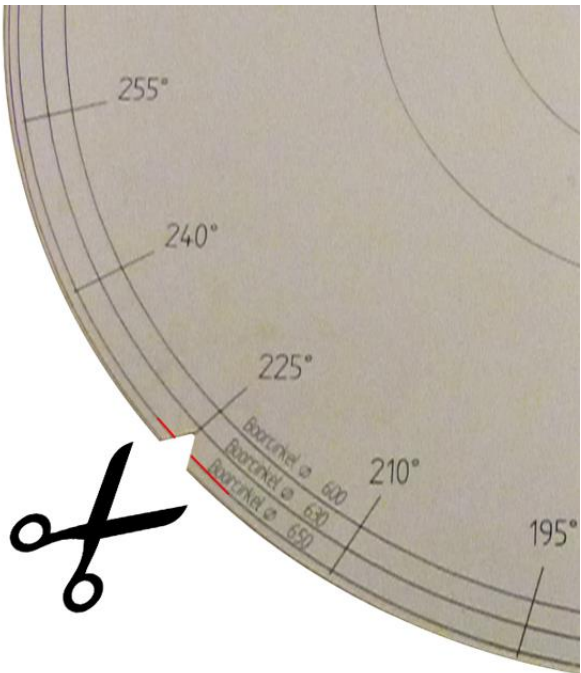
Prepare



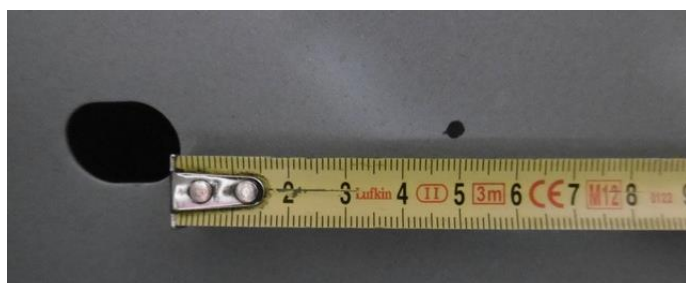
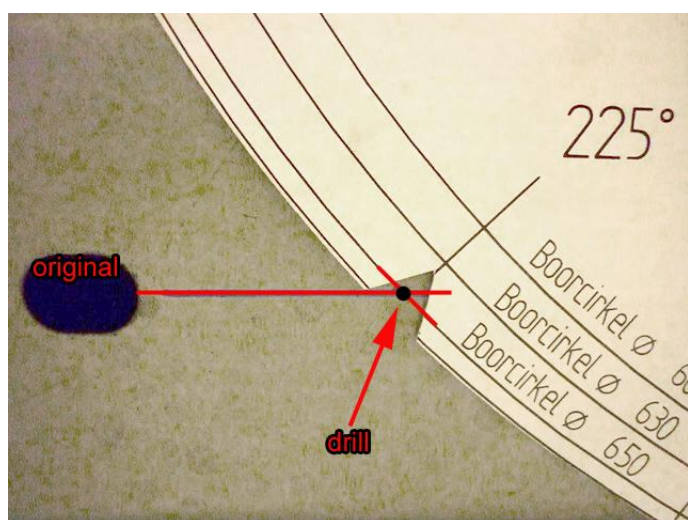
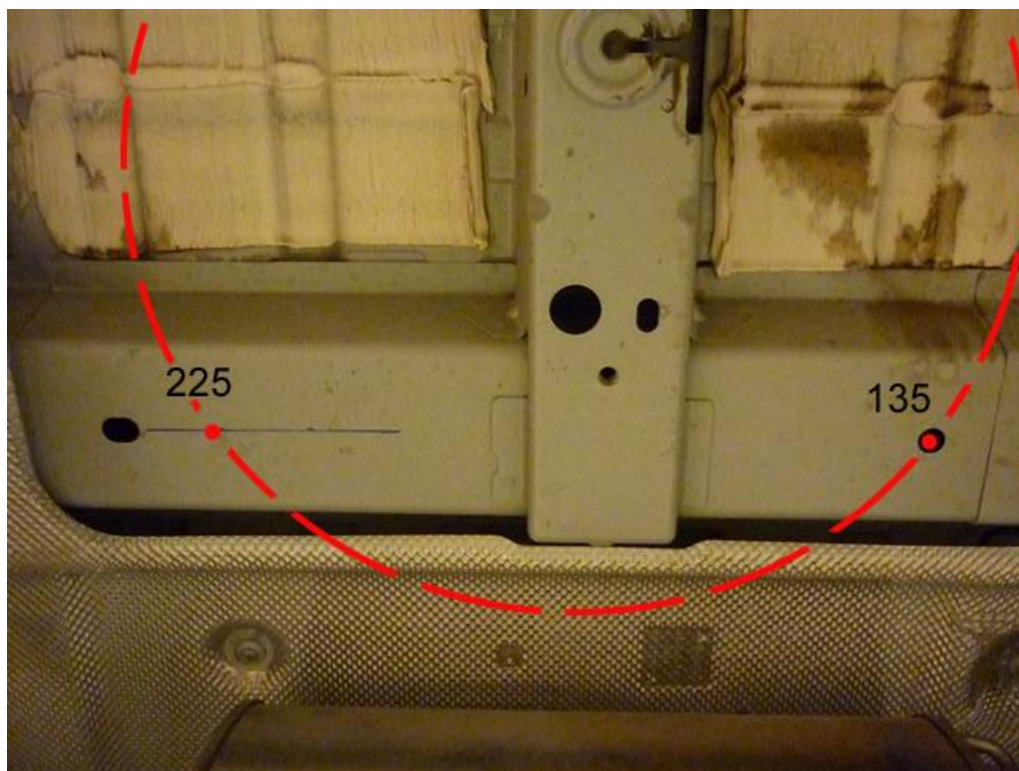
Preparation



Preparation

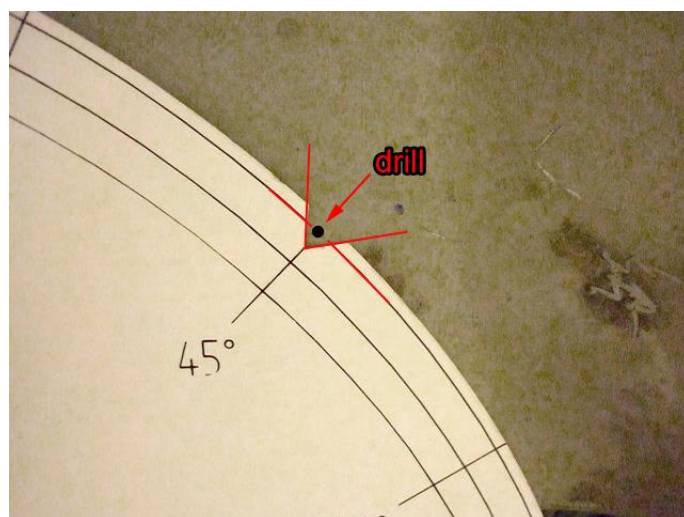
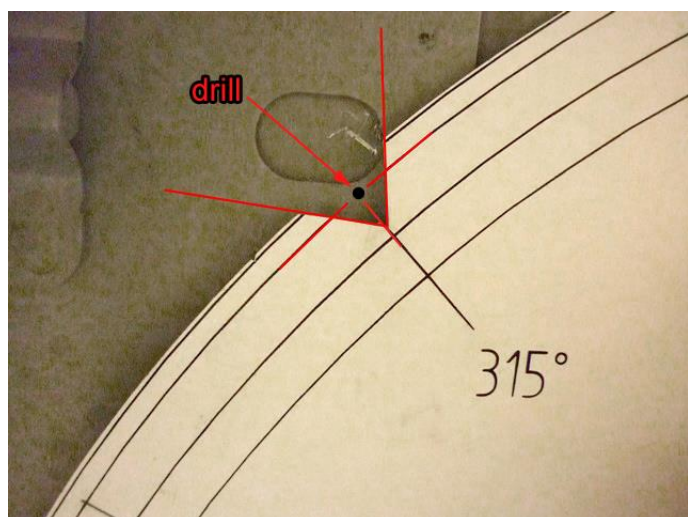
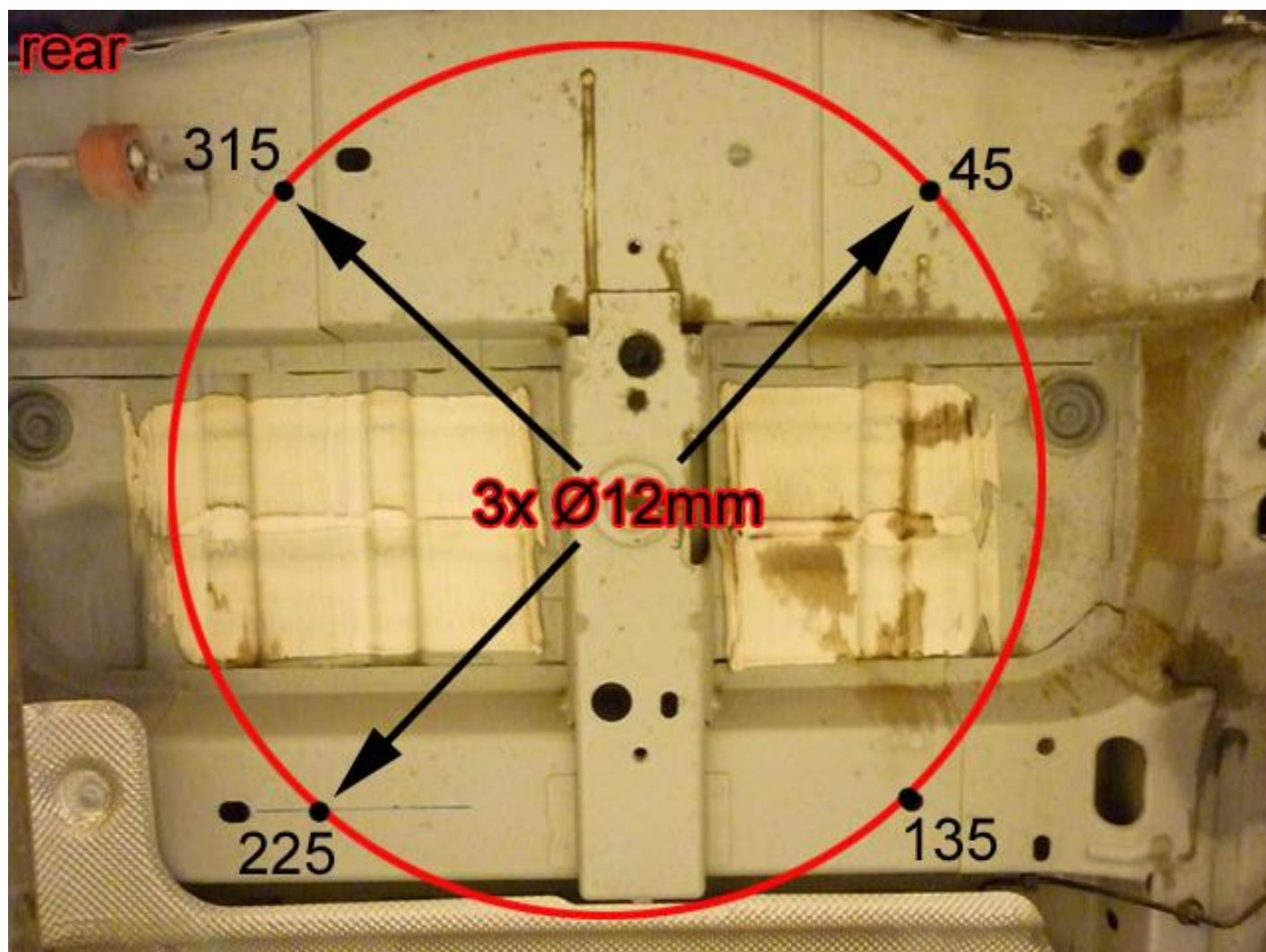


Underside car



Drill Ø5mm and punch through the drilled hole into the inside floor.
Once punched, drill up the holes on the underside up to Ø12mm.

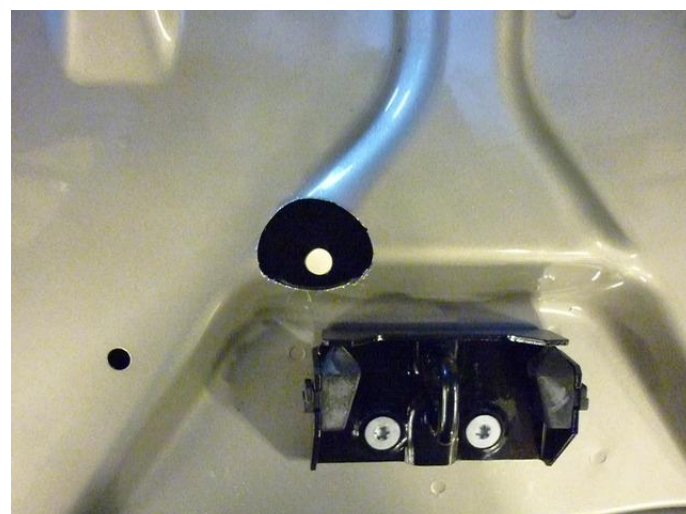
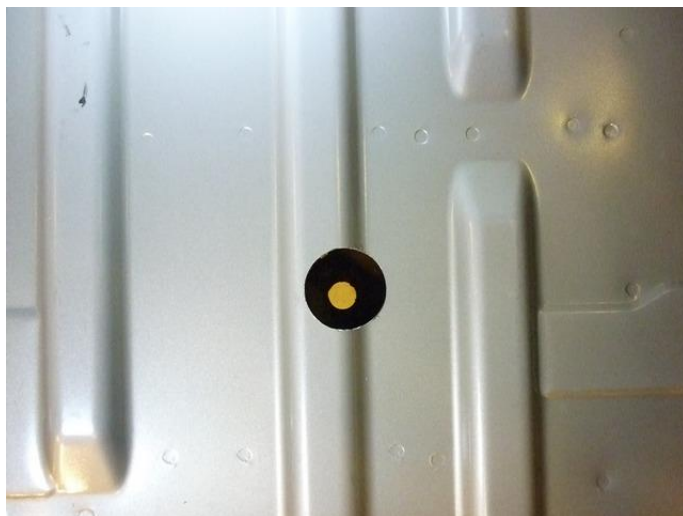
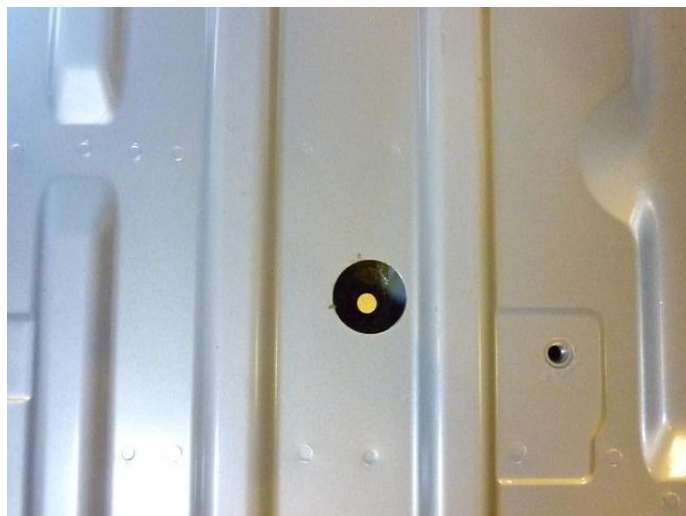
Underside car



Drill Ø5mm and punch through the drilled hole into the inside floor.
Once punched, drill up the holes on the underside up to Ø12mm.

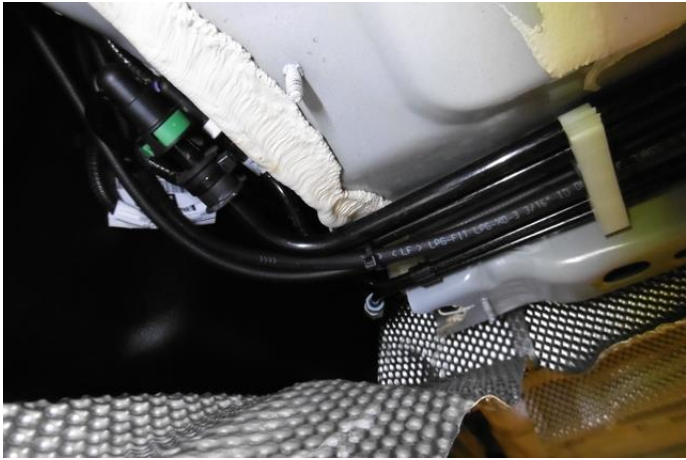
Inside car

See punched holes on the inside.
Drill up the punched holes Ø40mm.

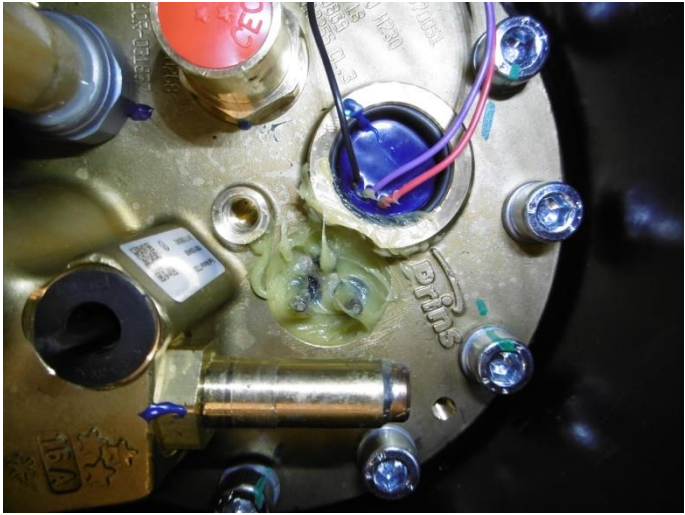


Insert the M10x60 bolts on the frontside. M10x25 on the rear side.

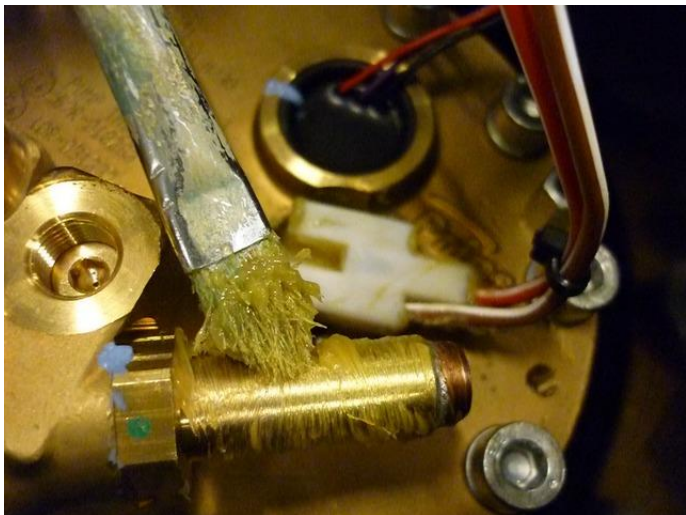
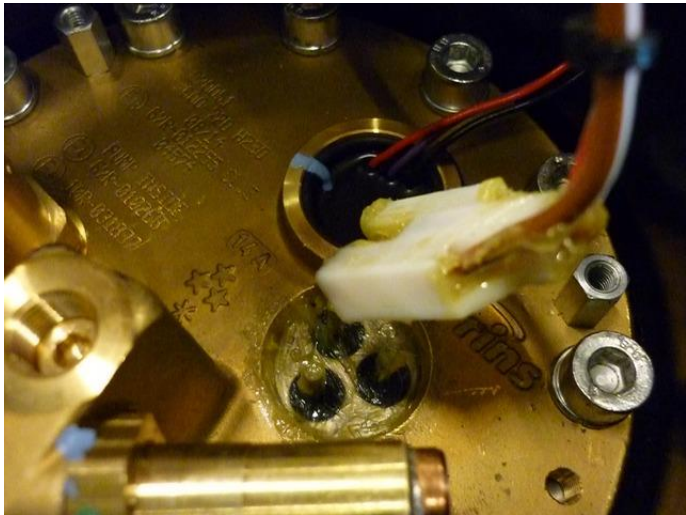
Fuel line routing



Prepare the Fuel Module

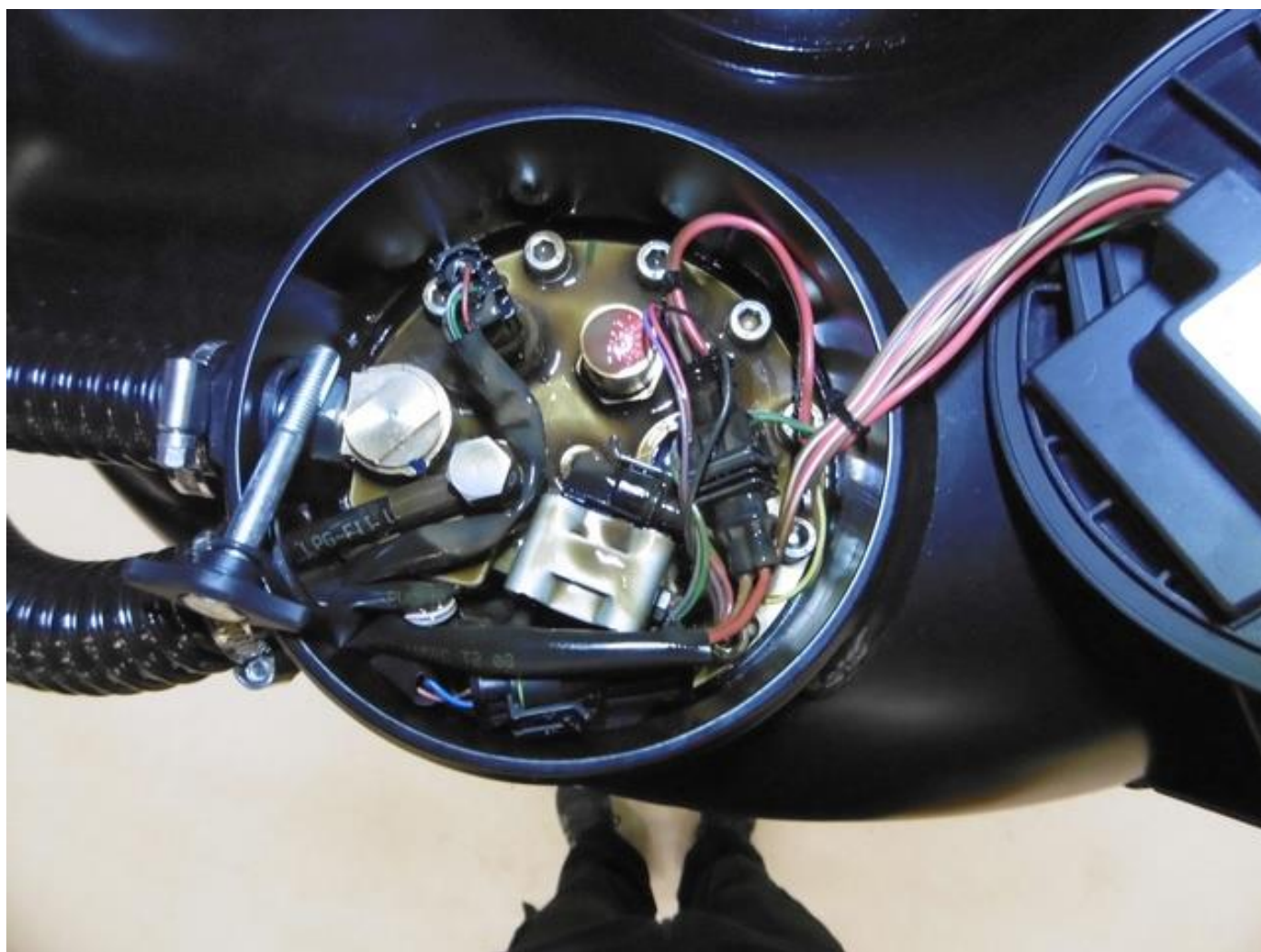


Grease for water-repellent



Spray with clear body coat when fuel lines are connected.

Tank connections



Connect all hoses and wiring. Protect with clear body coating/wax. Install cover.
Mount tank to floor.(page 15)

Filler

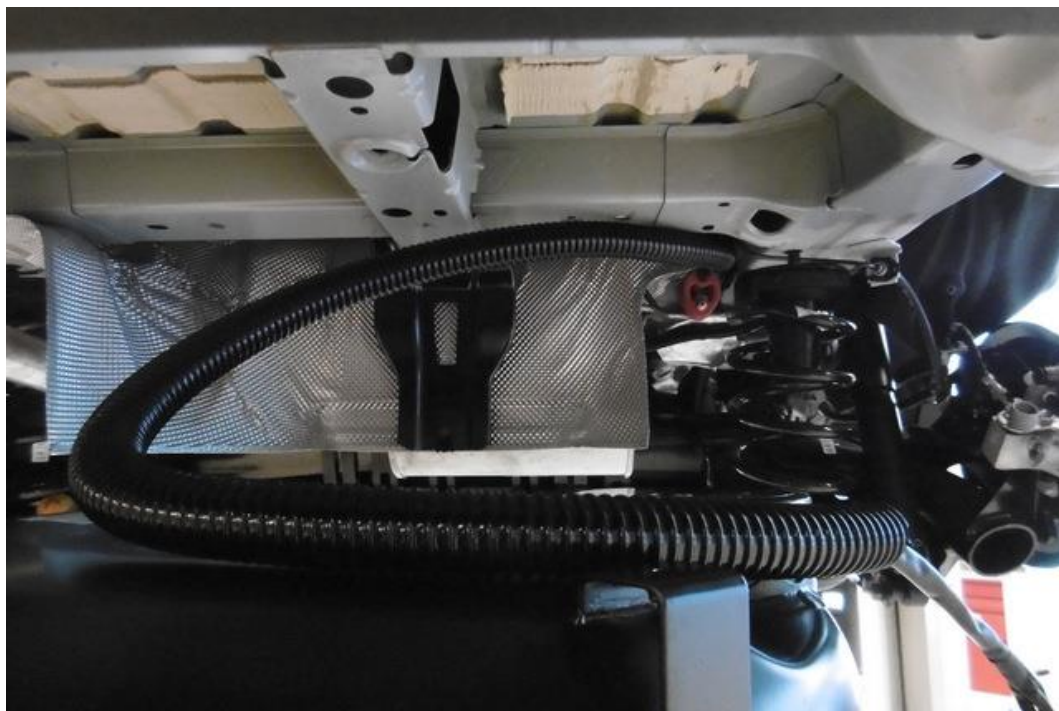


Install extension pipe with a locking compound

Filler



Ventilation pipe Fuel lines



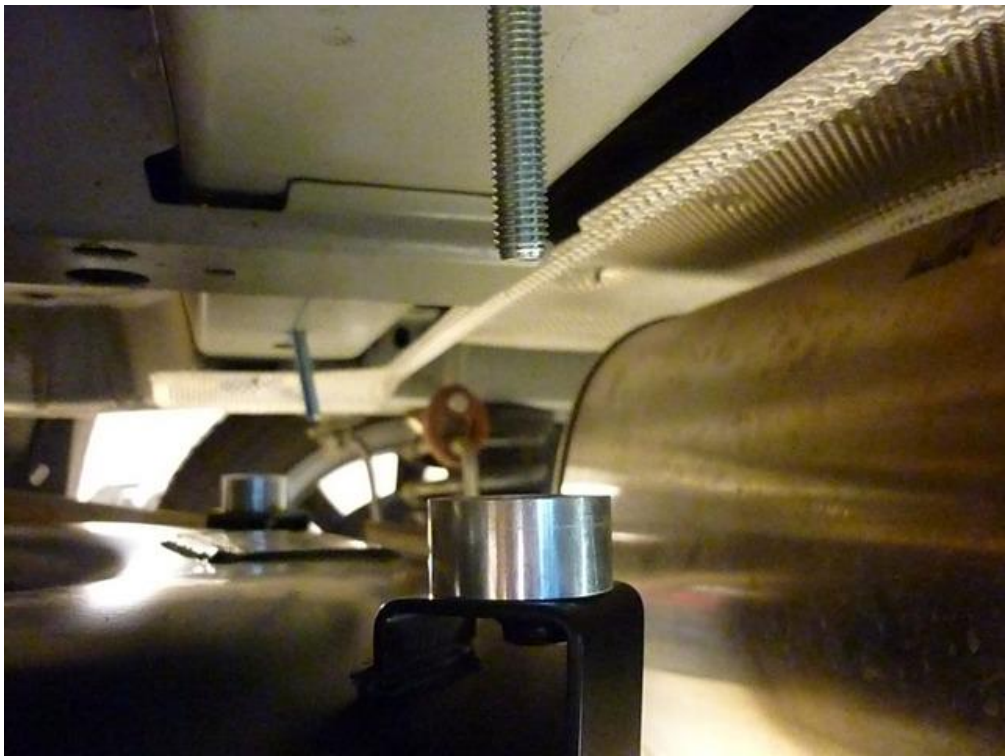
Connect fuel lines/wiring with 155cm of Ø30mm ventilation pipe

Ventilation pipe Filler hose

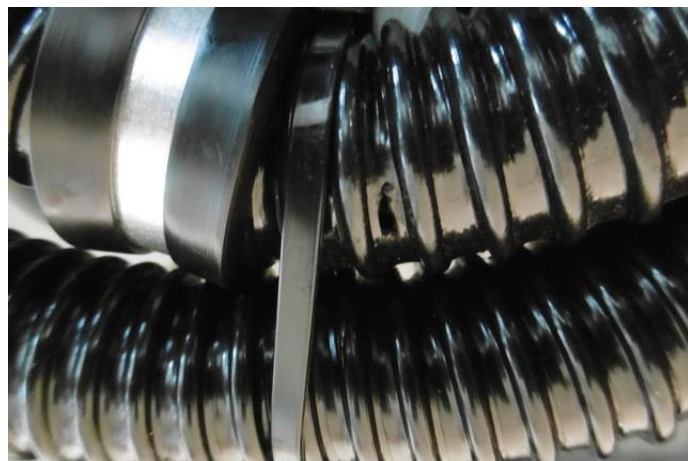
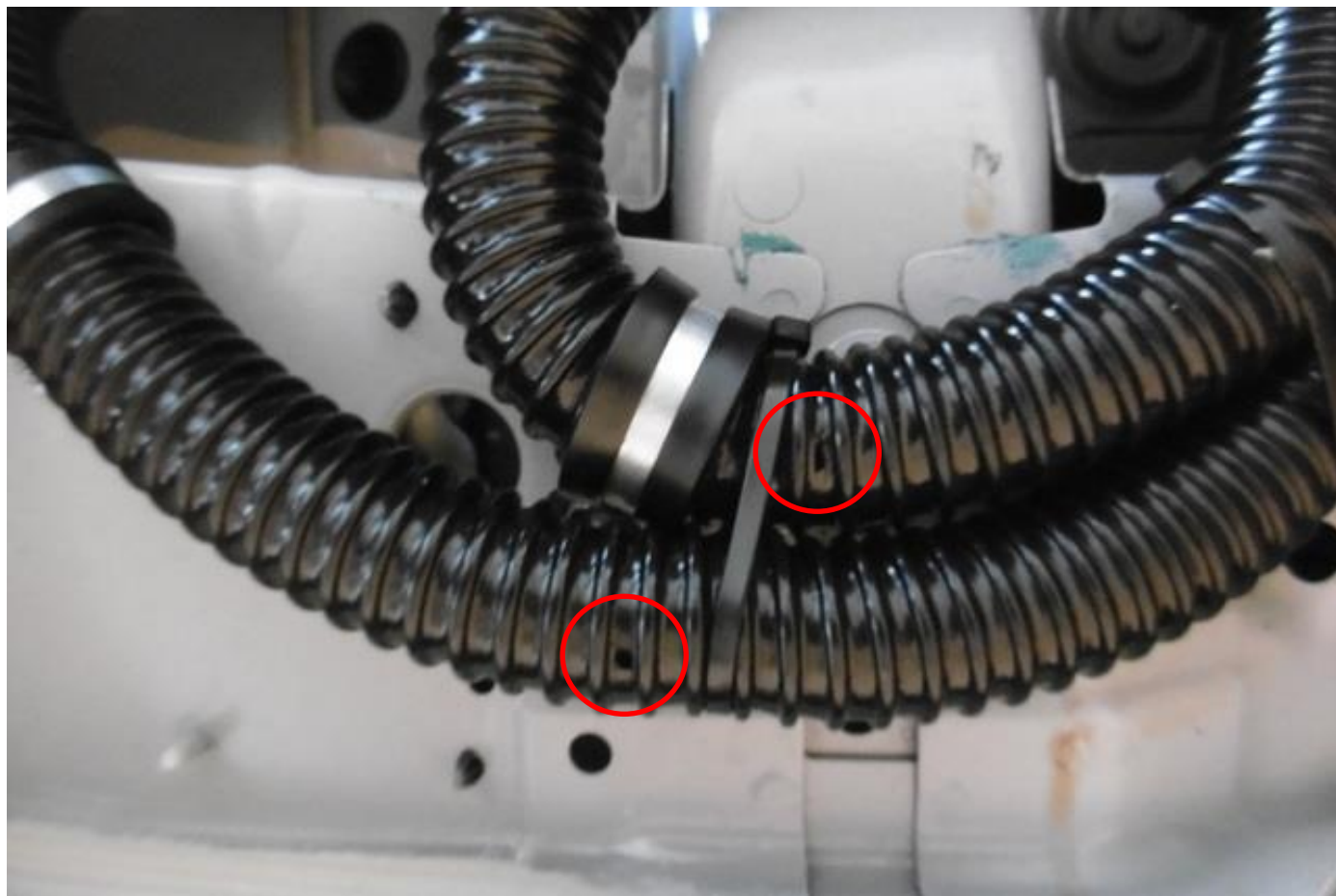


Connect filler hose with 100cm of Ø30mm ventilation pipe

Tank installation

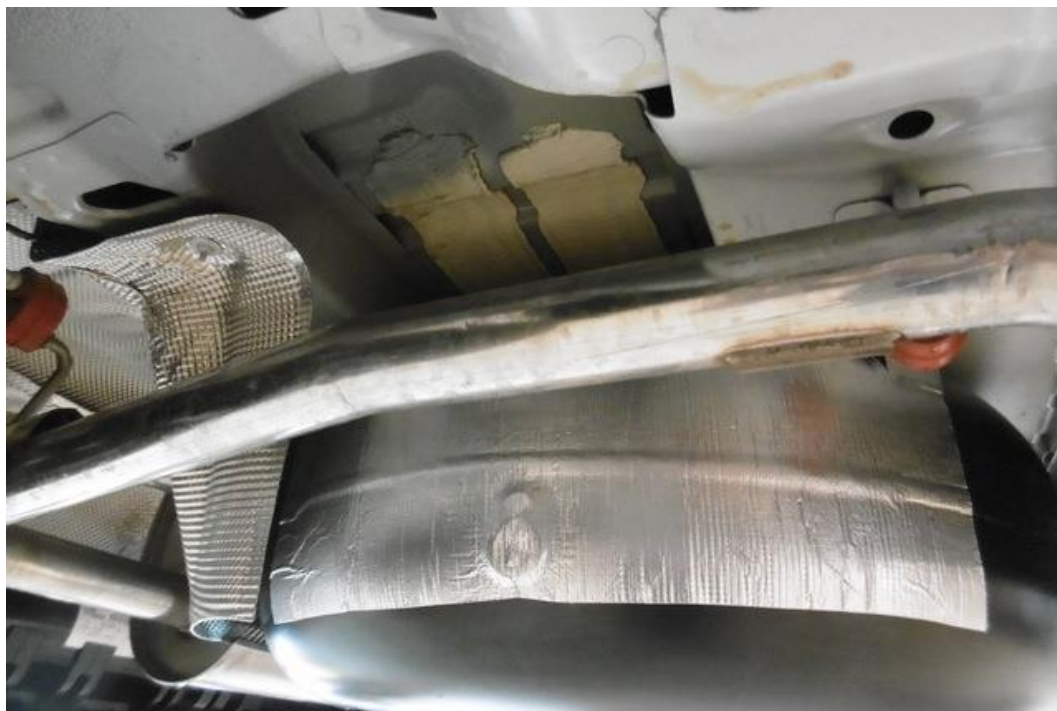


Water drain



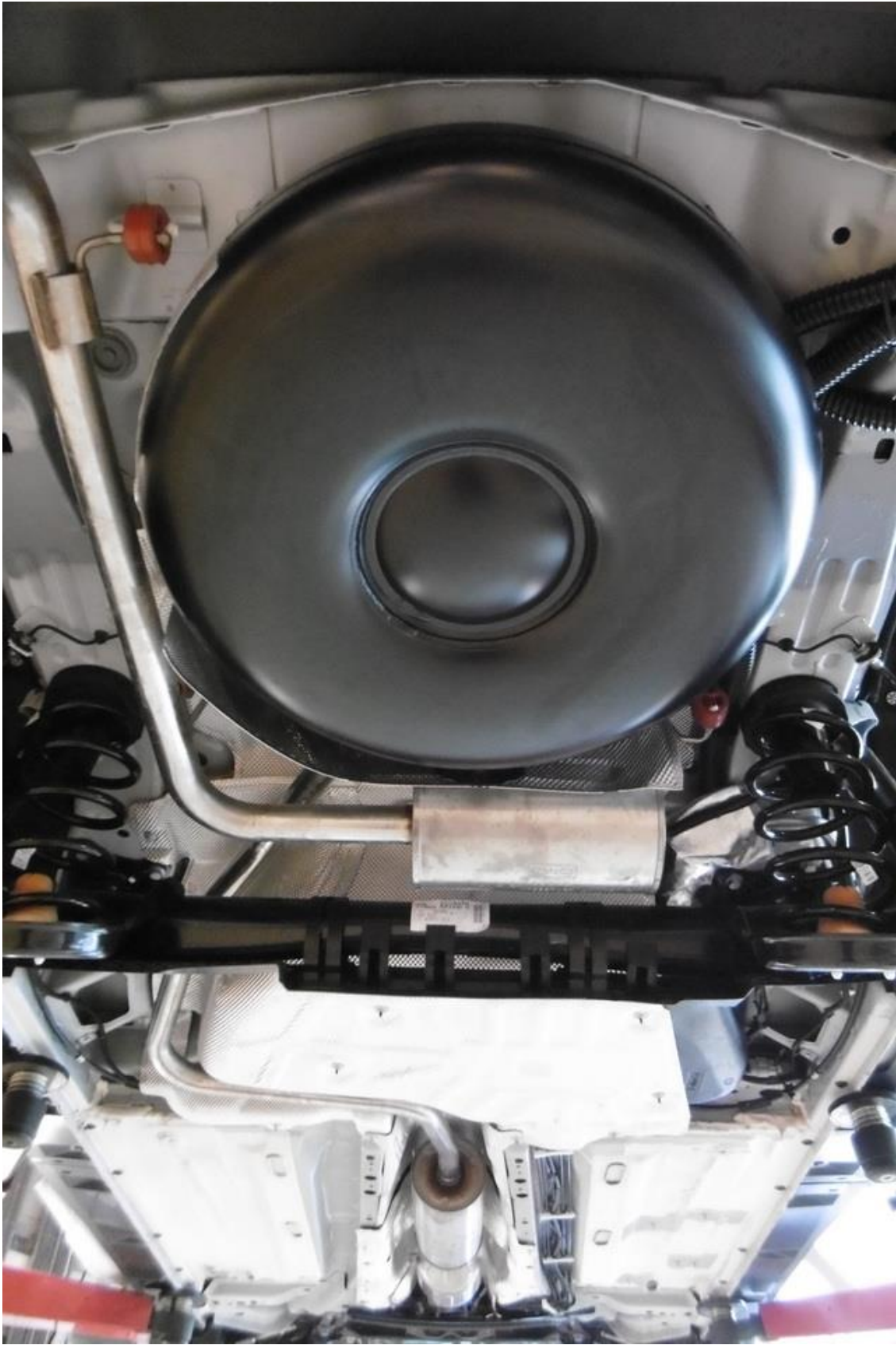
Punch 2 holes for water drain at lowest point.

Tank finish



Coat tank with a clear wax or guard paint.

Situation



Tank wiring

Wire number / code	Wire colour	Connection
3-pole tank level connector 1. 33 Ground tank level 2. 12 Tank level in 3. 11 + tank level supply	Brown-white Blue Red-blue	Connect the 3-pole connector to the tank level sensor.
4-pole Tank P/T sensor 1. 45 Ground P-Tank 2. 38 P-Tank 3. 15 T-Tank 4. 28 +5V sensor	Brown-black Green Grey Red	Connect the 4-pole connector to the P/T sensor.
2-pole Steering Diagnose connector 1. Ground pump driver 2. +12V pump driver	Brown Red	Connect the 2-pole connector to the driver, connector 3.
2-pole Steering Diagnose connector 1. 71 LSS3 Pump driver PWM 2. 64 Pump driver diagnose	Purple-pink Blue-grey	Connect the 2-pole connector to the driver, connector 4.

<i>Pump Driver</i>	<i>Wire colour</i>	<i>Connection</i>	
1. <i>2-pole connector tank lock-off</i>	Green-yellow Brown	From tank pump driver From tank pump driver	
2. <i>3-pole connector tank pump</i>	Red Brown	From tank pump driver From tank pump driver	
3. <i>2-pole connector driver</i>	Brown Red	From main ground From tank pump relay	Ground pump driver +12V pump driver
4. <i>2-pole connector driver</i>	Green Grey	From AFC pin 71 From AFC pin 64	LSS3 Pump driver PWM Pump driver diagnose

