



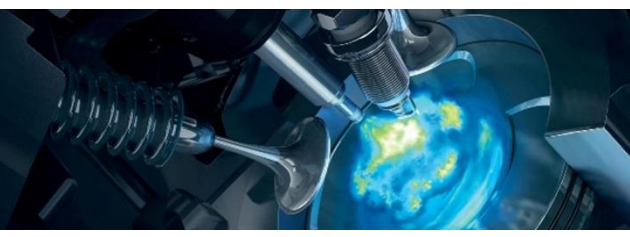
Quality, innovation and customer care, it's in our nature



Fitting instruction rear kit

MAKE OF AUTOMOBILE:
TYPE:
TANK CAPACITY:
TANK LOCATION
MODEL YEAR:
SYSTEM APPROVAL NUMBER (R115)
BOOT SET NUMBER
MANUAL NUMBER:
DATE

Ford
Focus 5drs
59 Liter STEP/Stako toroidal
Spare wheel room
9-2018->
E*-115R-0000** / DLM-LPG **
947/070205002/A
076/0708359
6-10-2016



Index

General 2

Tank Fuel Module 3

Tank isolation covers 4

Spare wheel room floor 5

Spare wheel room 6

Remove heat shield 7

Ventilation pipes 8

Tank bracket placement 9

Fuel lines 10

Filler 11

Filler hose 12

Filler hose 13

Finished 14

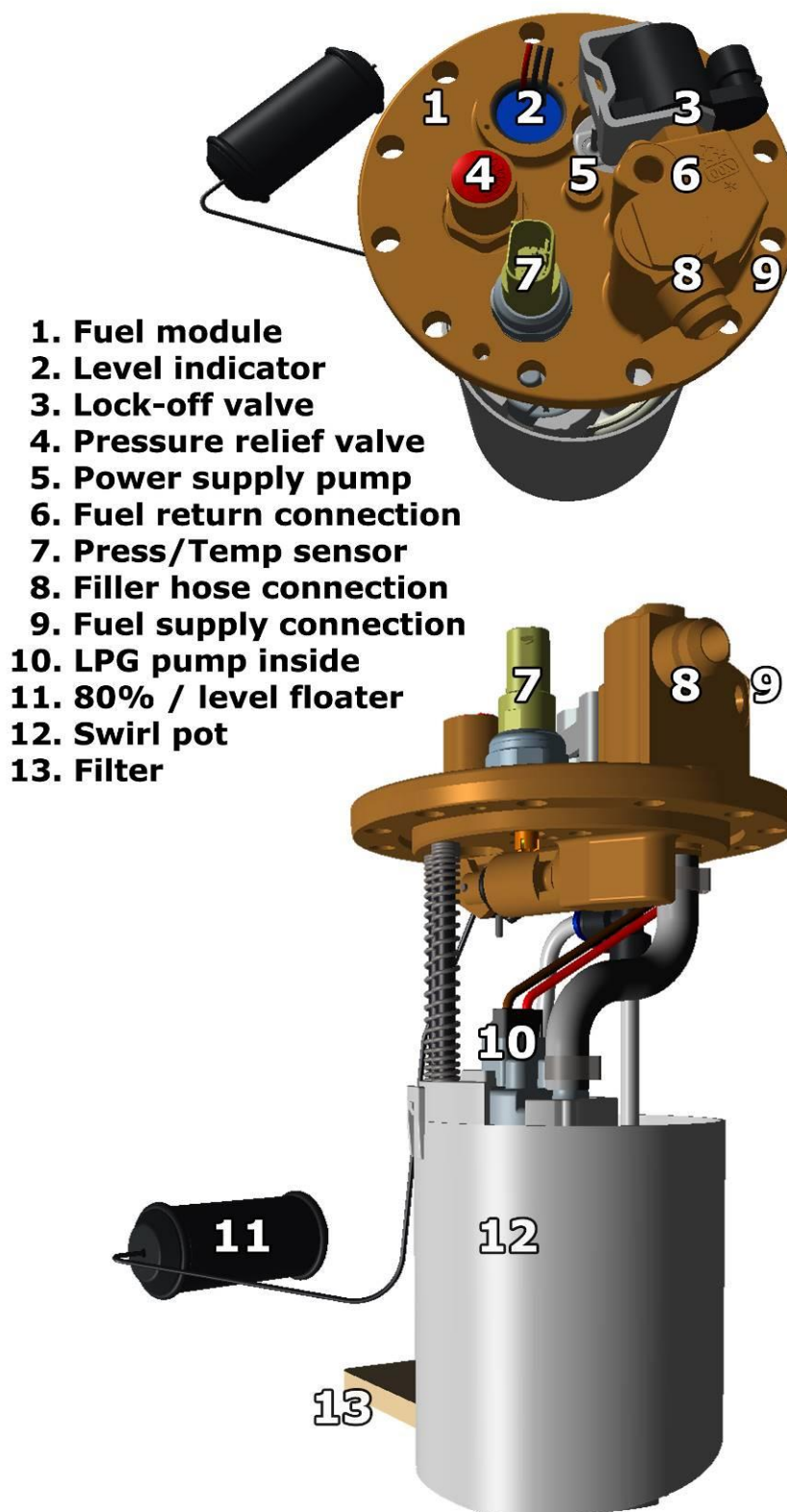
Tank wiring 15



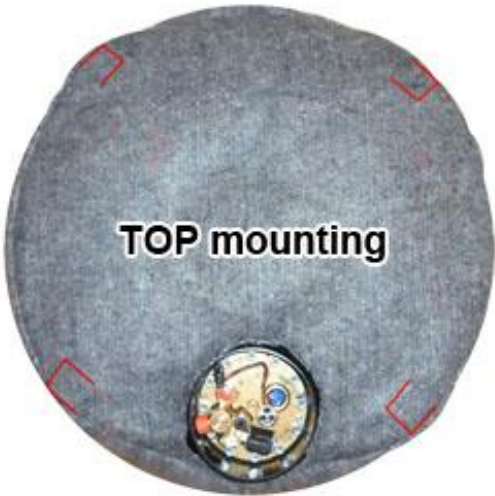
General

- Tools needed for installing the LPG tank :
 - Soldering iron
 - Drilling machine
 - Drilling kit
 - Drill size 22 / 30mm / 55mm / 70 mm
 - Workshop tools.
 - Gas leak detection device
 - Vacuum cleaner
 - Anti-corrosion agent / black body coating
 - Car lift
- Always disconnect the battery when installing / working on the LPG system.
- Make sure the ignition key is outside the car.
Be aware of central door locking, radio / telephone memory code, alarm system.
- Note the jack supporting points and moveable parts when mounting the LPG line.
- After having drilled the holes (use safety glasses) for the mounting of a tank frame, floor ventilation, etc., always treat the holes against corrosion after having removed the grindings.
- When the LPG tank is mounted underneath the vehicle treat the tank with a (black) under coating.
- Failure to follow the instructions in this manual can result in a poor or non-working gas installation or a dangerous situation.
- No component of the LPG-system shall be located within 100mm of the exhaust or similar heat source, unless such components are adequately shielded against heat.
- Mount the LPG tank according to the local LPG regulations. The LPG installer is responsible for that.
- After having completed the installation, check the whole system for gas leakage; use a gas leak detection device.
- Prins Autogassystemen is not responsible for any damages to people or objects as a result of changes to Prins products.
- Beware of moving, hot and rotating parts.
- Check [the Prins site](#) for tank certificates and wiring diagrams.

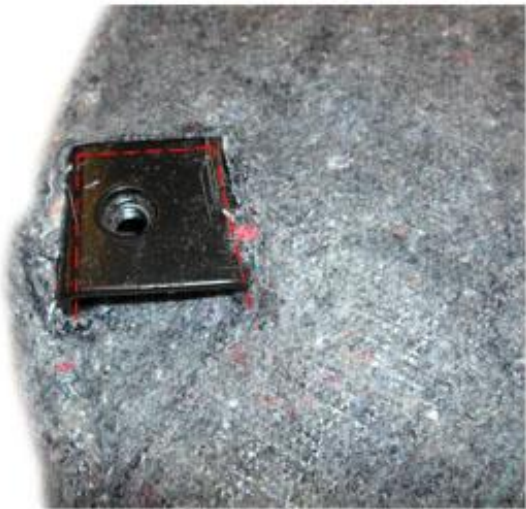
Tank Fuel Module



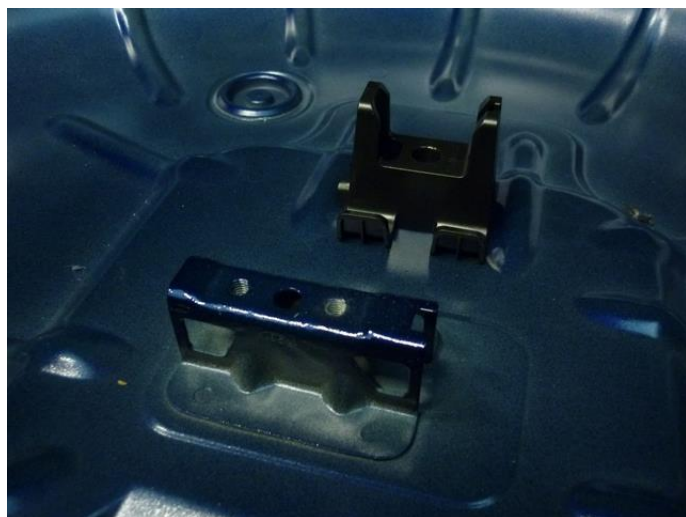
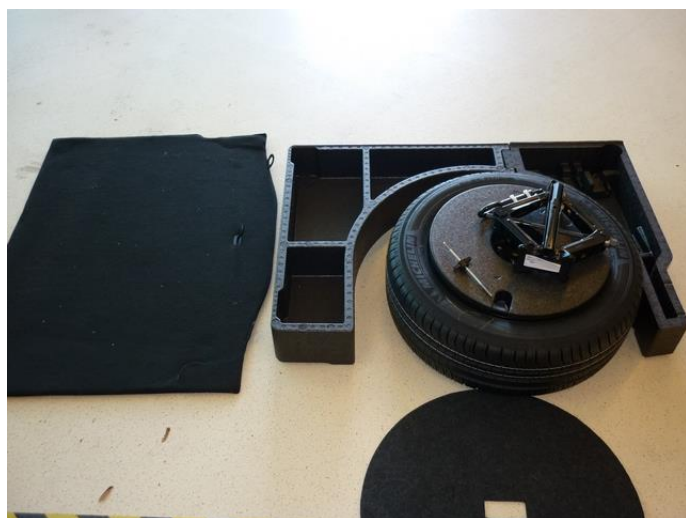
Tank isolation covers



4X

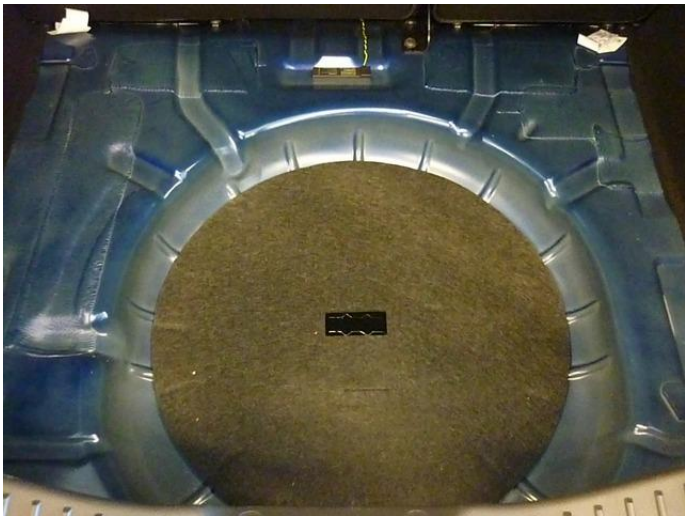


Spare wheel room floor



Remove all covers and tools. Remove centre spare wheel support.

Spare wheel room



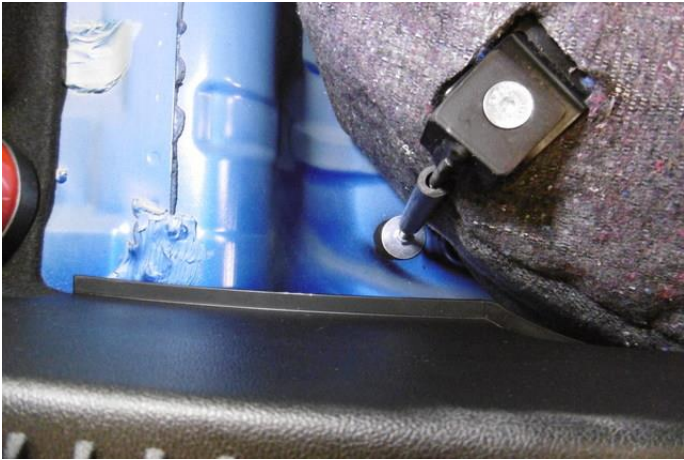
Remove heat shield



Ventilation pipes



Tank bracket placement



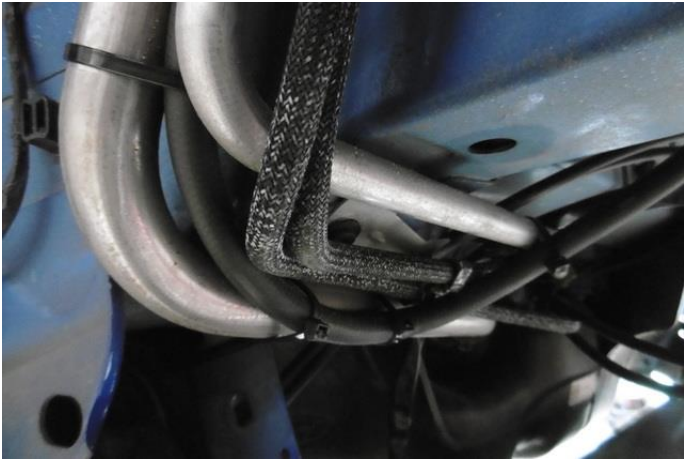
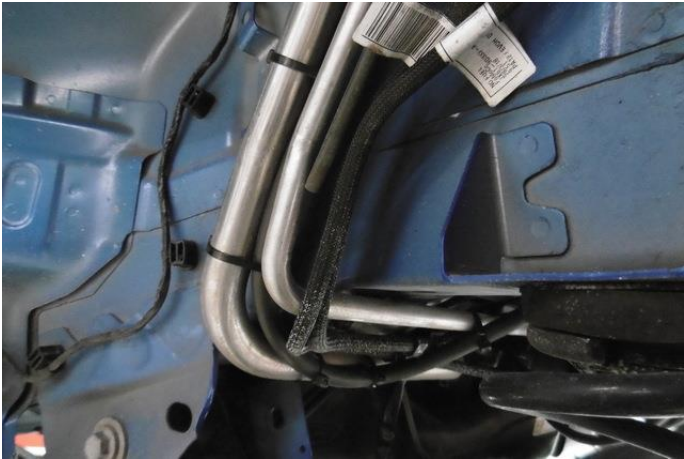
Fuel lines



Filler



Filler hose



Filler hose



Finished



Tank wiring

Wire number / code	Wire colour	Connection
3-pole tank level connector 1. 33 Ground tank level 2. 12 Tank level in 3. 11 + tank level supply	Brown-white Blue Red-blue	Connect the 3-pole connector to the tank level sensor.
4-pole Tank P/T sensor 1. 45 Ground P-Tank 2. 38 P-Tank 3. 15 T-Tank 4. 28 +5V sensor	Brown-black Green Grey Red	Connect the 4-pole connector to the P/T sensor.
2-pole Steering Diagnose connector 1. Ground pump driver 2. +12V pump driver	Brown Red	Connect the 2-pole connector to the driver, connector 3.
2-pole Steering Diagnose connector 1. 71 LSS3 Pump driver PWM 2. 64 Pump driver diagnose	Purple-pink Blue-grey	Connect the 2-pole connector to the driver, connector 4.

Pump Driver	Wire colour	Connection	
1. 2-pole connector tank lock-off	Green-yellow Brown	From tank pump driver From tank pump driver	
2. 3-pole connector tank pump	Red Brown	From tank pump driver From tank pump driver	
3. 2-pole connector driver	Brown Red	From main ground From tank pump relay	Ground pump driver +12V pump driver
4. 2-pole connector driver	Green Grey	From AFC pin 71 From AFC pin 64	LSS3 Pump driver PWM Pump driver diagnose

