



## Fitting instruction rear kit

MAKE OF AUTOMOBILE:  
TYPE:  
TANK CAPACITY:  
TANK LOCATION  
MODEL YEAR:  
SYSTEM APPROVAL NUMBER ( R115 )  
BOOT SET NUMBER  
MANUAL NUMBER:  
DATE

Ford  
Focus 5drs  
59 Liter Fuel Module Stako toroidal  
Spare wheel room  
10-2014  
#R115-0000\*\*  
947/070016/A // 947/070205001/A  
076/0706059  
6-11-2015



Index

General ..... 2

Tank Fuel Module ..... 3

Tank isolation covers ..... 4

Spare wheel room floor ..... 5

Spare wheel room floor ..... 6

Ventilation pipes ..... 7

Ventilation pipes ..... 8

Tank insulation ..... 9

Marking brackets ..... 10

Floor raise ..... 11

Tank installation ..... 12

Adapt inlay ..... 13

Fuel lines ..... 14

Fuel lines ..... 15

Fuel lines ..... 16

Filler ..... 17

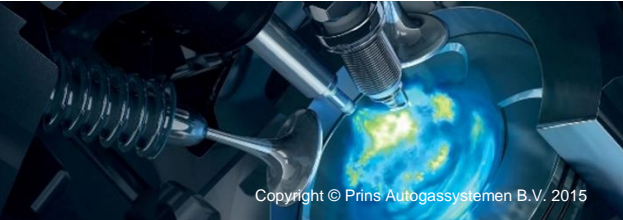
Filler installation ..... 18

Filler hose ..... 19

Filler hose ..... 20

Floor ..... 21

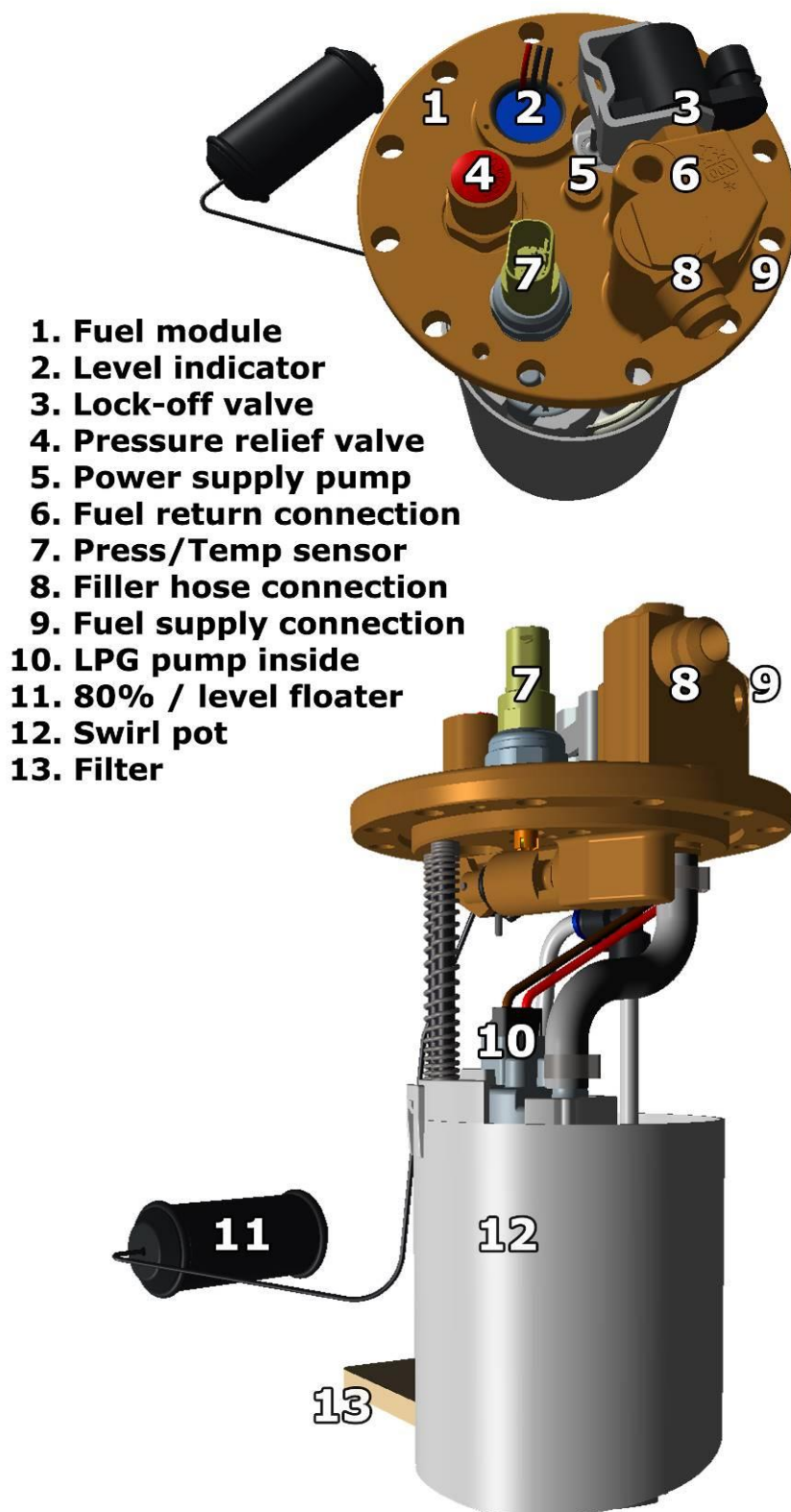
Tank wiring ..... 22



## General

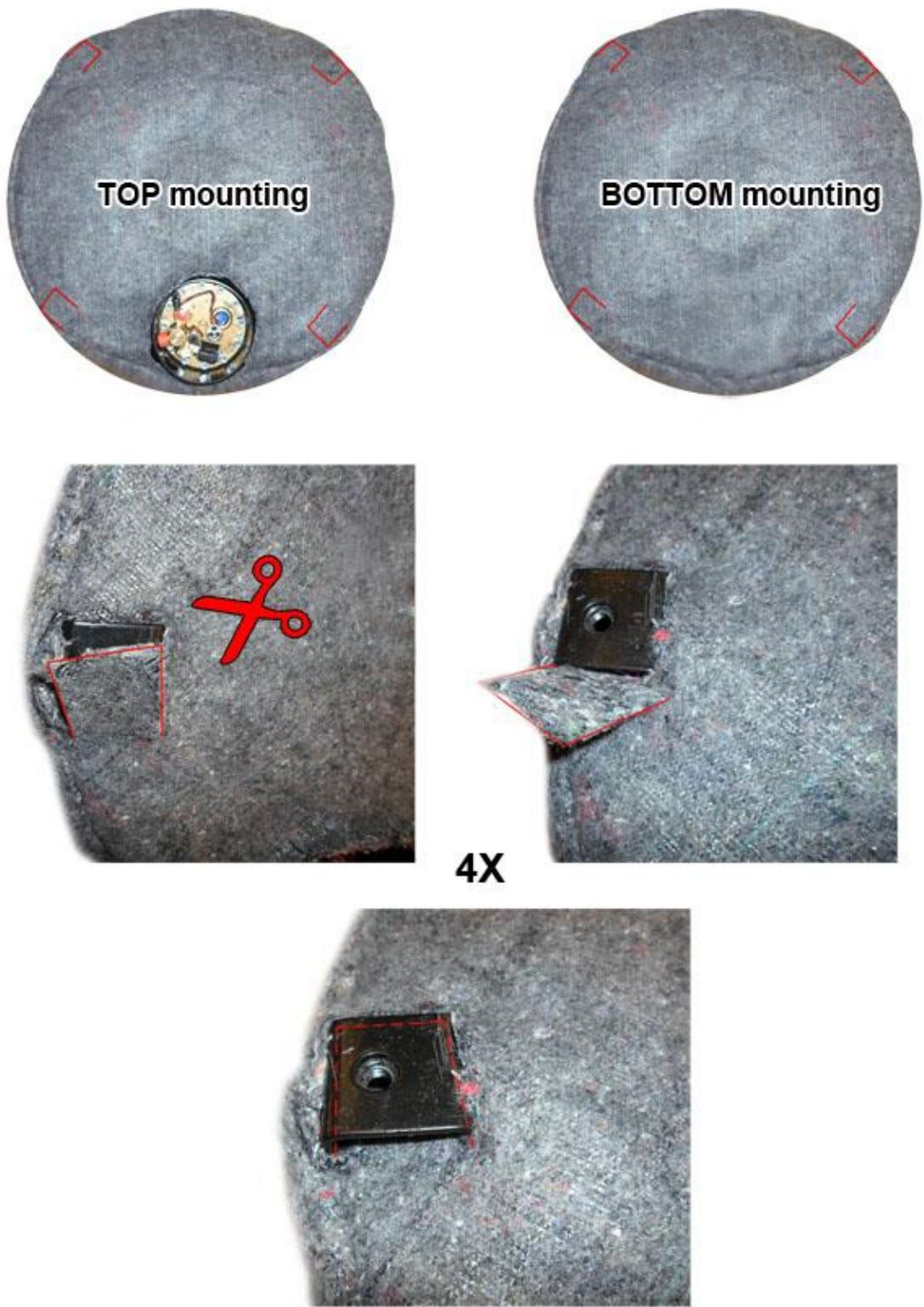
- Tools needed for installing the LPG tank :
  - Soldering iron
  - Drilling machine
  - Drilling kit
  - Drill size 22 / 30mm / 55mm / 70 mm
  - Workshop tools.
  - Gas leak detection device
  - Vacuum cleaner
  - Anti-corrosion agent / black body coating
  - Car lift
- Always disconnect the battery when installing / working on the LPG system.
- Make sure the ignition key is outside the car.  
Be aware of central door locking, radio / telephone memory code, alarm system.
- Note the jack supporting points and moveable parts when mounting the LPG line.
- After having drilled the holes (use safety glasses) for the mounting of a tank frame, floor ventilation, etc., always treat the holes against corrosion after having removed the grindings.
- When the LPG tank is mounted underneath the vehicle treat the tank with a (black) under coating.
- Failure to follow the instructions in this manual can result in a poor or non-working gas installation or a dangerous situation.
- No component of the LPG-system shall be located within 100mm of the exhaust or similar heat source, unless such components are adequately shielded against heat.
- Mount the LPG tank according to the local LPG regulations. The LPG installer is responsible for that.
- After having completed the installation, check the whole system for gas leakage; use a gas leak detection device.
- Prins Autogassystemen is not responsible for any damages to people or objects as a result of changes to Prins products.
- Beware of moving, hot and rotating parts.
- Check [the Prins site](#) for tank certificates and wiring diagrams.

## Tank Fuel Module



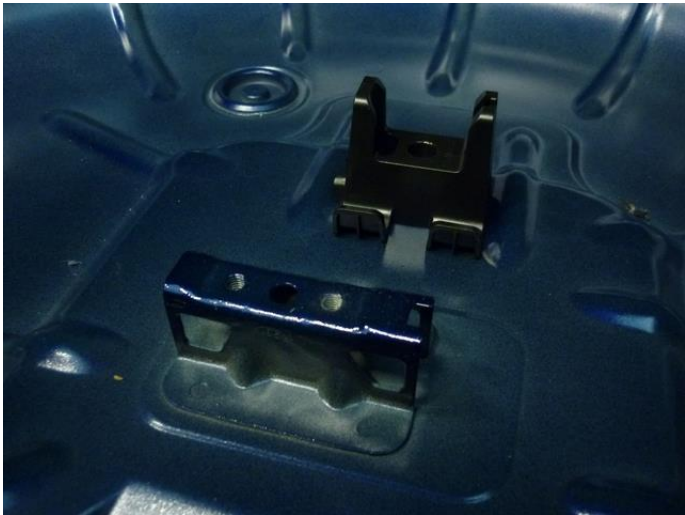
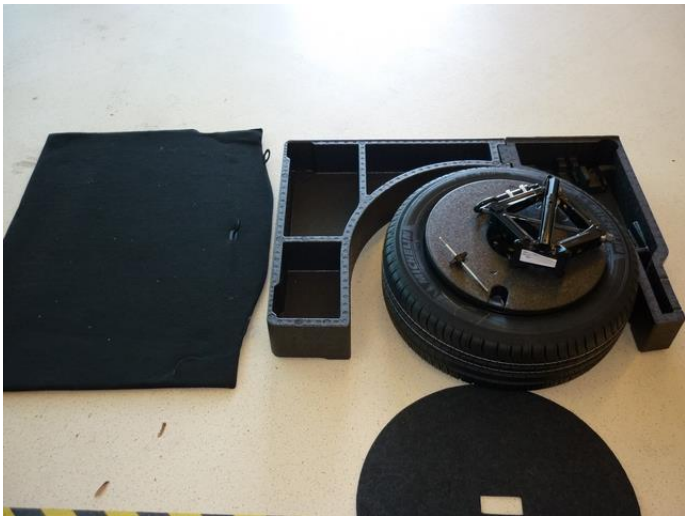


Tank isolation covers



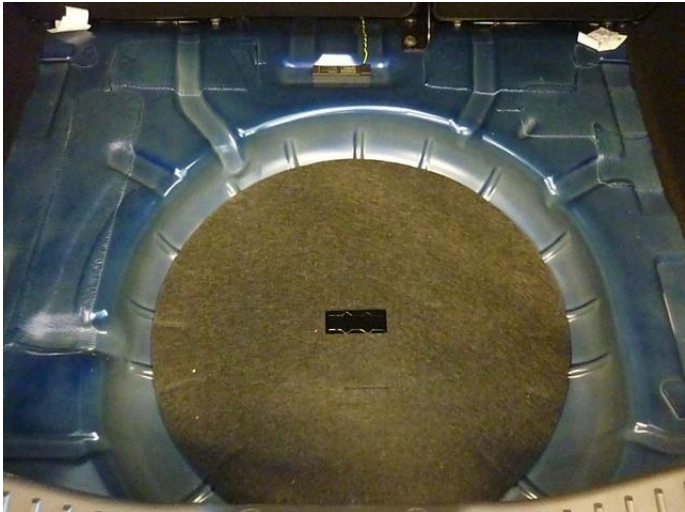


Spare wheel room floor

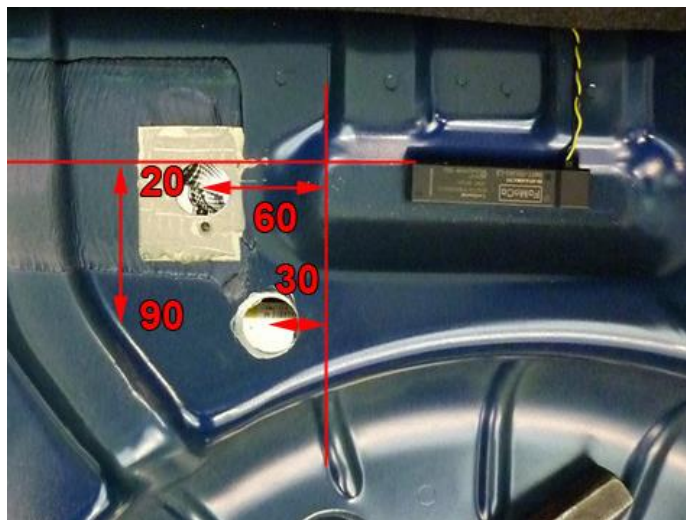




Spare wheel room floor



## Ventilation pipes



Drill 2x $\varnothing$ 30mm, place inlay and mark from underside.





Ventilation pipes

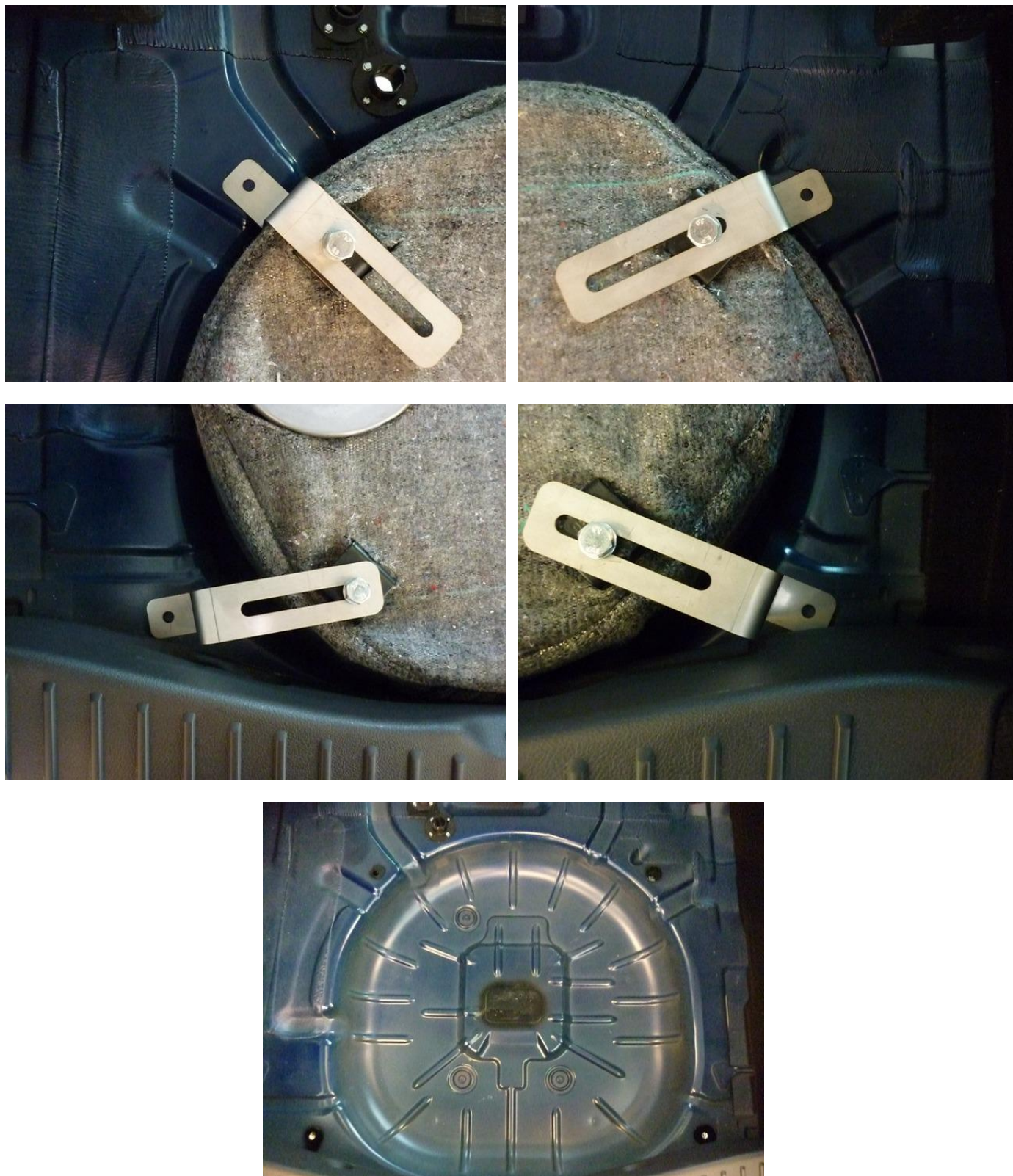


Tank insulation





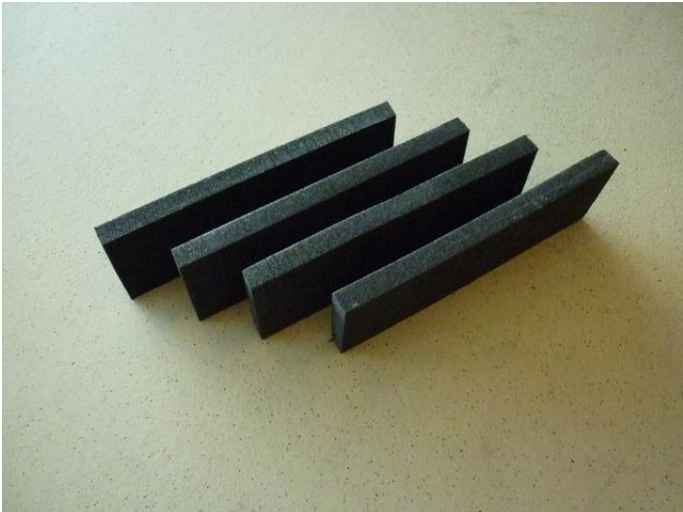
## Marking brackets



Drill 4 holes



Floor raise





Tank installation





Adapt inlay





Fuel lines



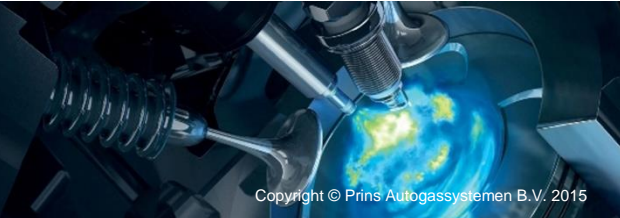


Fuel lines





Fuel lines





Filler



Glue on the 50mm extension, use a locking compound.



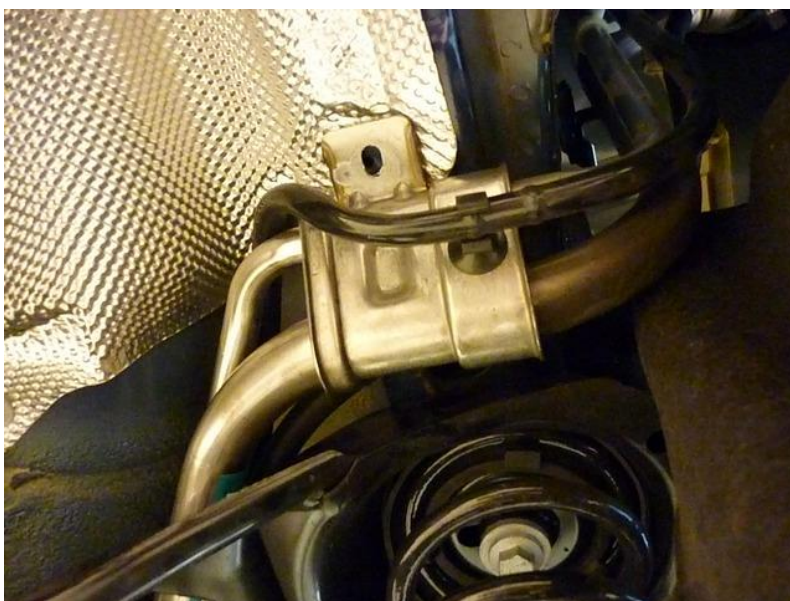


Filler installation



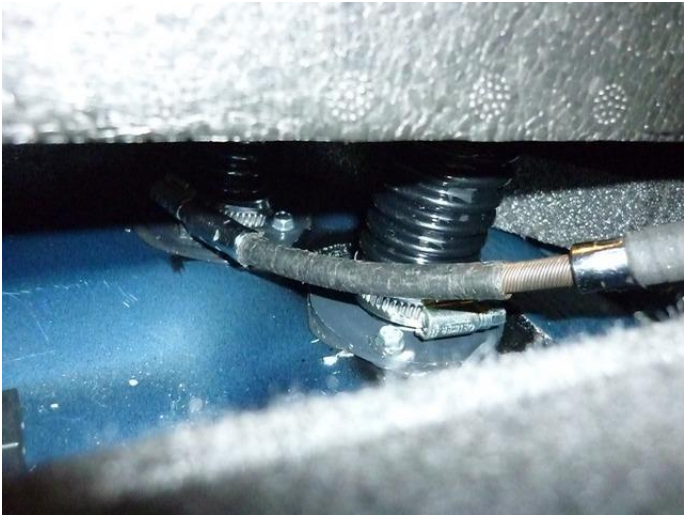


## Filler hose



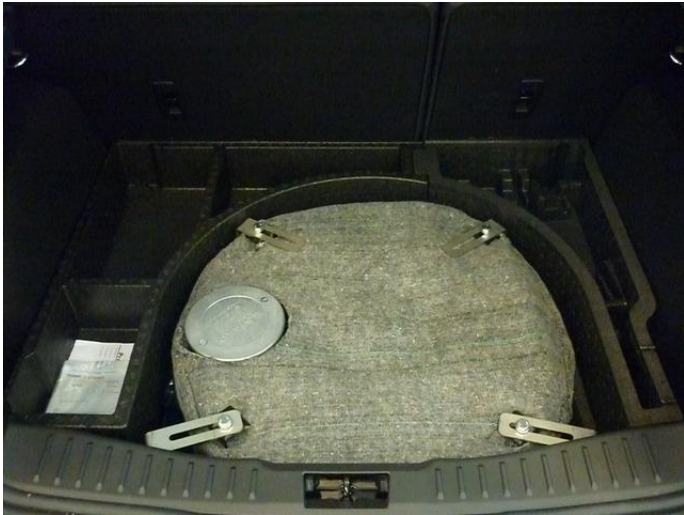


Filler hose





Floor





## Tank wiring

Wire number / code	Wire colour AFC	Connection
<b>3-pole tank level connector</b> 1. 33 Ground tank level 2. 12 Tank level in 3. 11 + tank level supply	Brown-white Blue Red-blue	Connect the 3-pole connector to the tank level sensor.
<b>4-pole Tank P/T sensor</b> 1. 45 Ground P-Tank 2. 38 P-Tank 3. 15 T-Tank 4. 28 +5V sensor	Brown-black Green Grey Red	Connect the 4-pole connector to the P/T sensor.
<b>2-pole Steering Diagnose connector</b> 1. Ground pump driver 2. +12V pump driver	Brown 2.5mm <sup>2</sup> Red 2.5mm <sup>2</sup>	Connect the 2-pole connector to the driver, connector 3.
<b>2-pole Steering Diagnose connector</b> 1. 71 LSS3 Pump driver PWM 2. 64 Pump driver diagnose	Purple-pink Blue-grey	Connect the 2-pole connector to the driver, connector 4.

<b>Pump Driver</b>			
<b>1.</b> 2-pole connector tank lock-off	Green-yellow Brown	From tank pump driver From tank pump driver	
<b>2.</b> 3-pole connector tank pump	Red 2.5mm <sup>2</sup> Brown 2.5mm <sup>2</sup>	From tank pump driver From tank pump driver	
<b>3.</b> 2-pole connector driver	1. Brown 2.5mm <sup>2</sup> 2. Red 2.5mm <sup>2</sup>	From main ground From tank pump relay	Ground pump driver +12V pump driver
<b>4.</b> 2-pole connector driver	1. Green 2. Grey	From AFC pin 71 From AFC pin 64	LSS3 Pump driver PWM Pump driver diagnose

