



## Fitting instruction rear kit

MAKE OF AUTOMOBILE:  
TYPE:  
TANK CAPACITY:  
TANK LOCATION  
MODEL YEAR:  
SYSTEM APPROVAL NUMBER ( R115 )  
BOOT SET NUMBER  
MANUAL NUMBER:  
DATE

Ford  
Fiesta VII JA8  
62 Liter Fuel Module Stako toroidal  
Spare wheel room  
2013-  
E\*-115R-0000\*\* / DLM-LPG \*\*  
947/070019/A  
076/0706562  
18-4-2016



Index

General ..... 2

Tank Fuel Module ..... 3

Tank isolation covers ..... 4

KOP ..... 5

Front bracket ..... 6

Rear brackets ..... 7

Ventilation bleeders ..... 8

Supply ..... 9

Filler hose ..... 10

Filler ..... 11

Filler hose ..... 12

End situation ..... 13

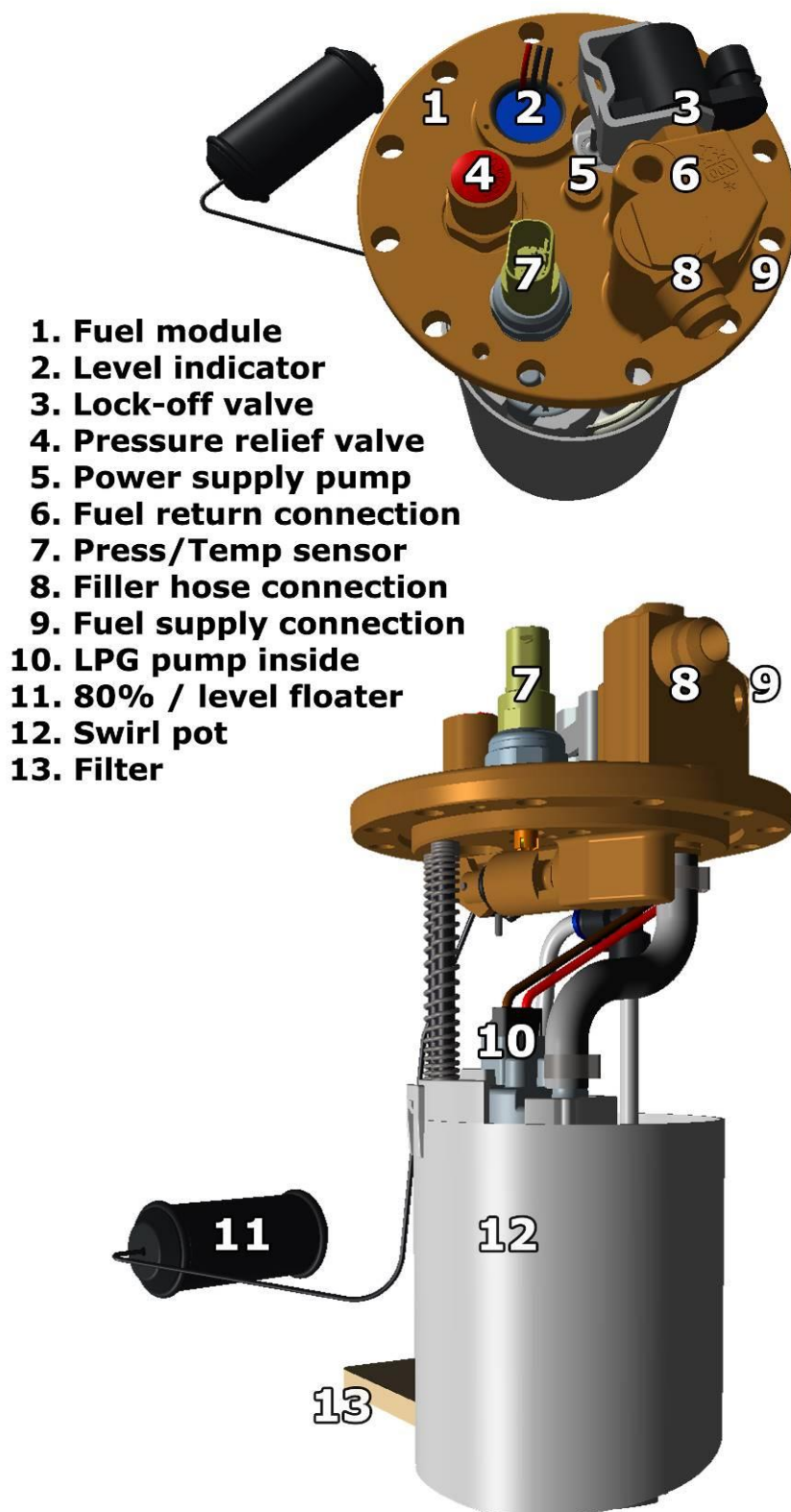
Tank wiring ..... 14



## General

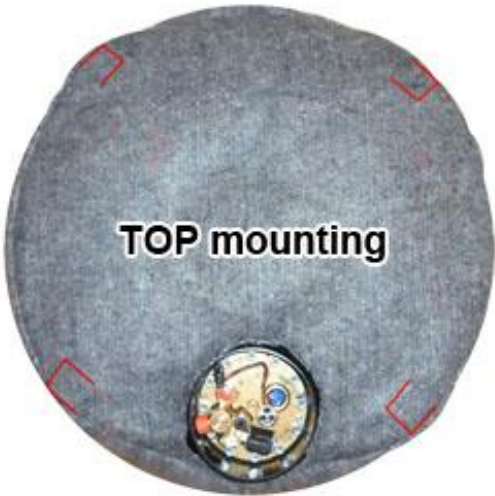
- Tools needed for installing the LPG tank :
  - Soldering iron
  - Drilling machine
  - Drilling kit
  - Drill size 22 / 30mm / 55mm / 70 mm
  - Workshop tools.
  - Gas leak detection device
  - Vacuum cleaner
  - Anti-corrosion agent / black body coating
  - Car lift
- Always disconnect the battery when installing / working on the LPG system.
- Make sure the ignition key is outside the car.  
Be aware of central door locking, radio / telephone memory code, alarm system.
- Note the jack supporting points and moveable parts when mounting the LPG line.
- After having drilled the holes (use safety glasses) for the mounting of a tank frame, floor ventilation, etc., always treat the holes against corrosion after having removed the grindings.
- When the LPG tank is mounted underneath the vehicle treat the tank with a (black) under coating.
- Failure to follow the instructions in this manual can result in a poor or non-working gas installation or a dangerous situation.
- No component of the LPG-system shall be located within 100mm of the exhaust or similar heat source, unless such components are adequately shielded against heat.
- Mount the LPG tank according to the local LPG regulations. The LPG installer is responsible for that.
- After having completed the installation, check the whole system for gas leakage; use a gas leak detection device.
- Prins Autogassystemen is not responsible for any damages to people or objects as a result of changes to Prins products.
- Beware of moving, hot and rotating parts.
- Check [the Prins site](#) for tank certificates and wiring diagrams.

## Tank Fuel Module

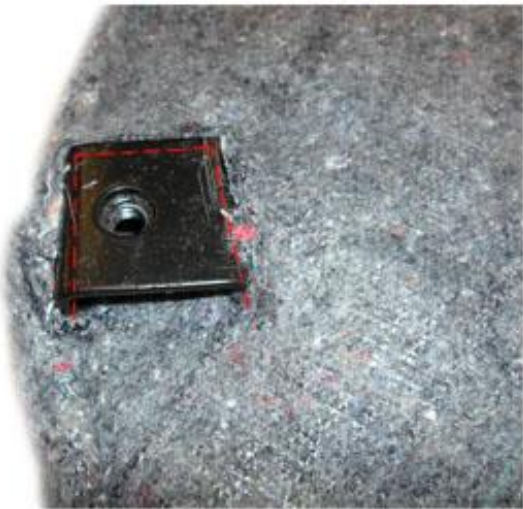




Tank isolation covers



4X



## KOP



Remove rear seat bolts and place a washer on each side.  
Install bracket with the original bolts.

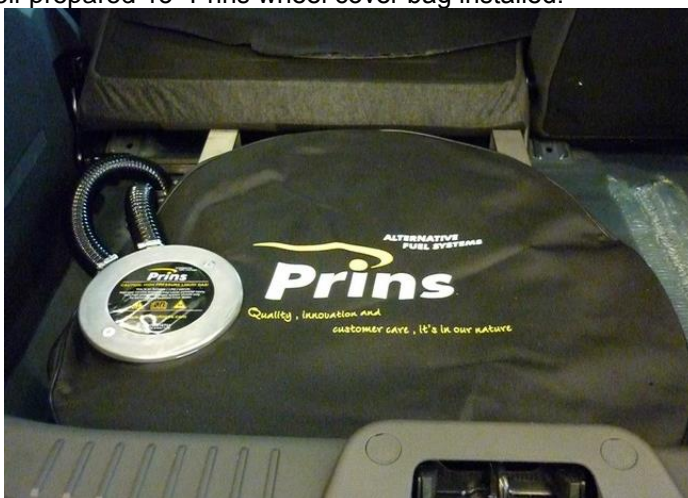


## Front bracket

Place tank with isolation covers and install the front bracket.



The tank shown further in this manual has a self prepared 15" Prins wheel cover bag installed.





Rear brackets



2x



Cut off 45mm



Punch the holes and drill from underside Ø8.2mm

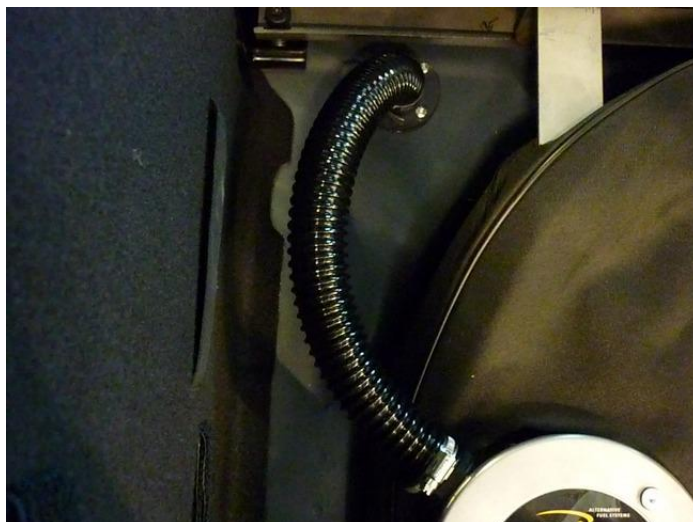




# Ventilation bleeders



## Supply



Fuel line



Reroute ( loop ) when too long.





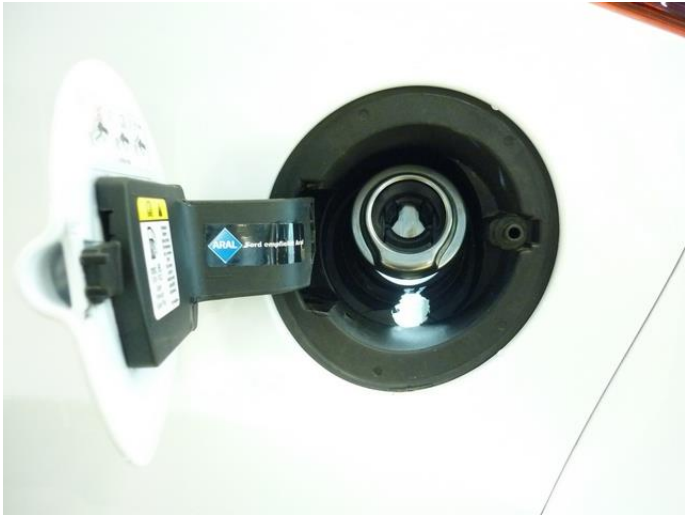
## Filler hose



Insert and install filler hose before connecting to filler.



Filler





Filler hose





## End situation



Tool bag: optional  
Cut foam blocks 3x 50x10x5cm to raise original floor cover.





## Tank wiring

Wire number / code	Wire colour	Connection
<b>3-pole tank level connector</b> 1. 33 Ground tank level 2. 12 Tank level in 3. 11 + tank level supply	Brown-white Blue Red-blue	Connect the 3-pole connector to the tank level sensor.
<b>4-pole Tank P/T sensor</b> 1. 45 Ground P-Tank 2. 38 P-Tank 3. 15 T-Tank 4. 28 +5V sensor	Brown-black Green Grey Red	Connect the 4-pole connector to the P/T sensor.
<b>2-pole Steering Diagnose connector</b> 1. Ground pump driver 2. +12V pump driver	Brown Red	Connect the 2-pole connector to the driver, connector 3.
<b>2-pole Steering Diagnose connector</b> 1. 71 LSS3 Pump driver PWM 2. 64 Pump driver diagnose	Purple-pink Blue-grey	Connect the 2-pole connector to the driver, connector 4.

<b>Pump Driver</b>	<b>Wire colour</b>	<b>Connection</b>	
<b>1.</b> 2-pole connector tank lock-off	Green-yellow Brown	From tank pump driver From tank pump driver	
<b>2.</b> 3-pole connector tank pump	Red Brown	From tank pump driver From tank pump driver	
<b>3.</b> 2-pole connector driver	Brown Red	From main ground From tank pump relay	Ground pump driver +12V pump driver
<b>4.</b> 2-pole connector driver	Green Grey	From AFC pin 71 From AFC pin 64	LSS3 Pump driver PWM Pump driver diagnose

